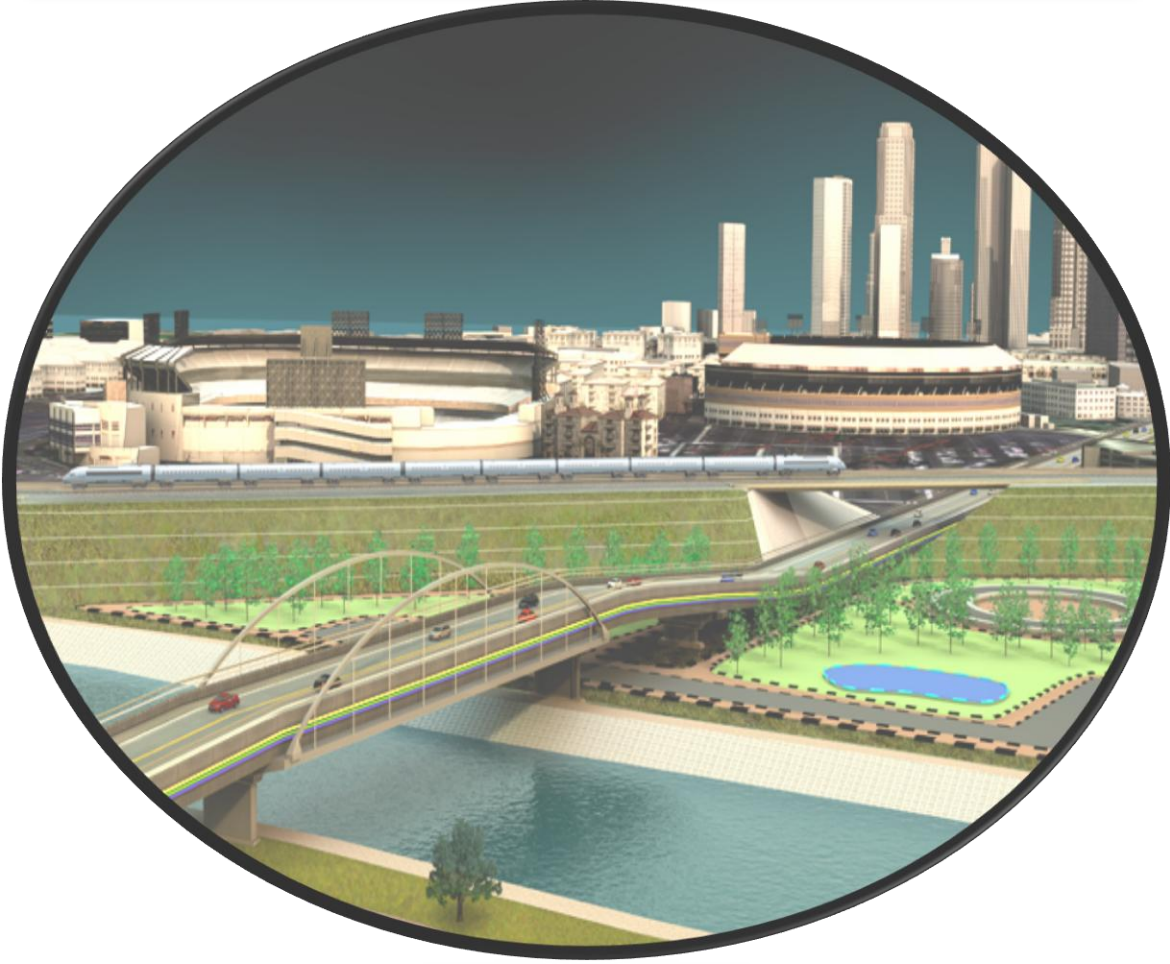


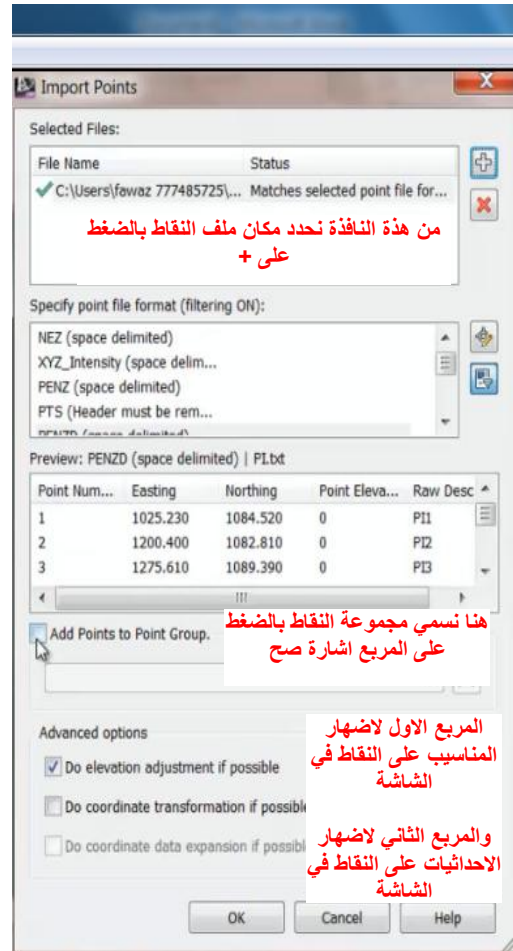
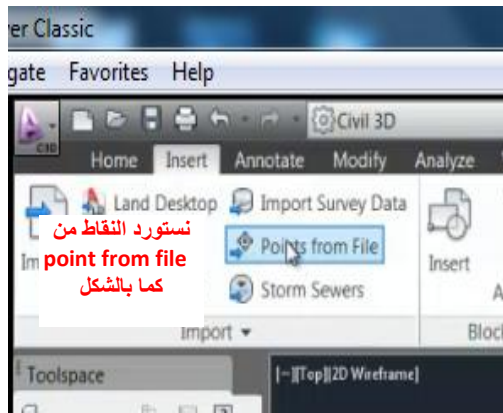
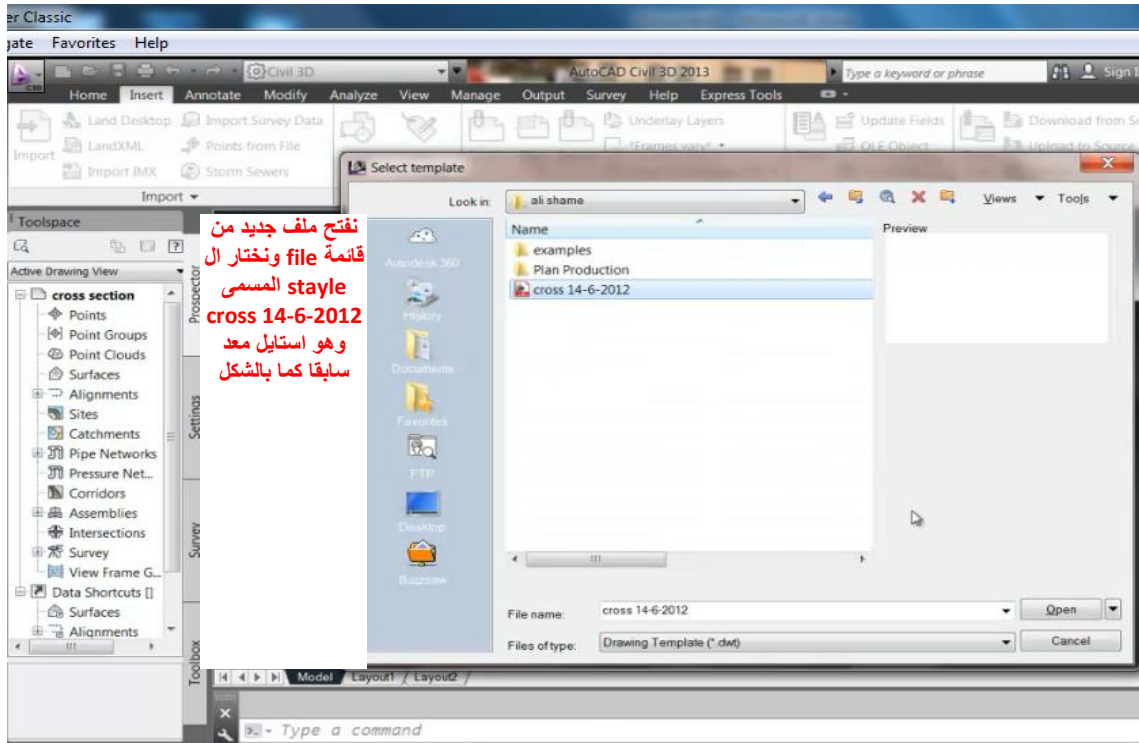
12/1/2012

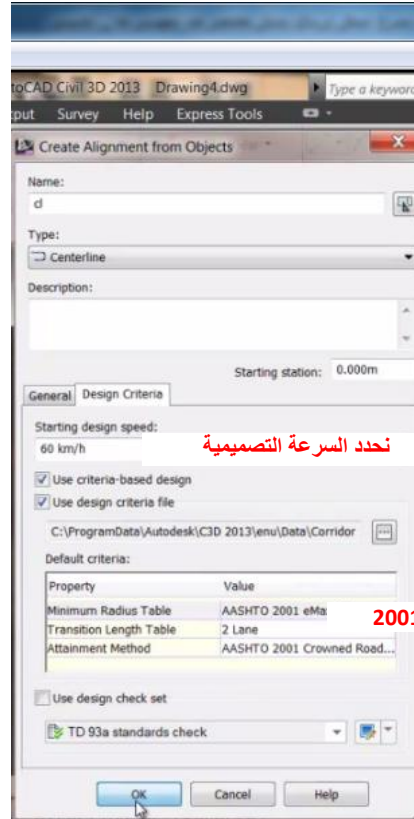
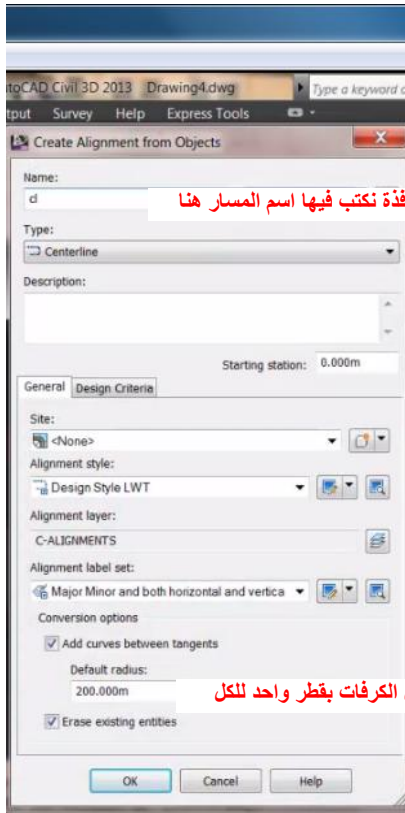
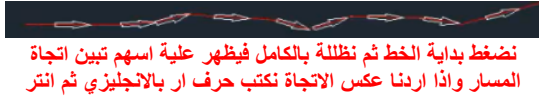
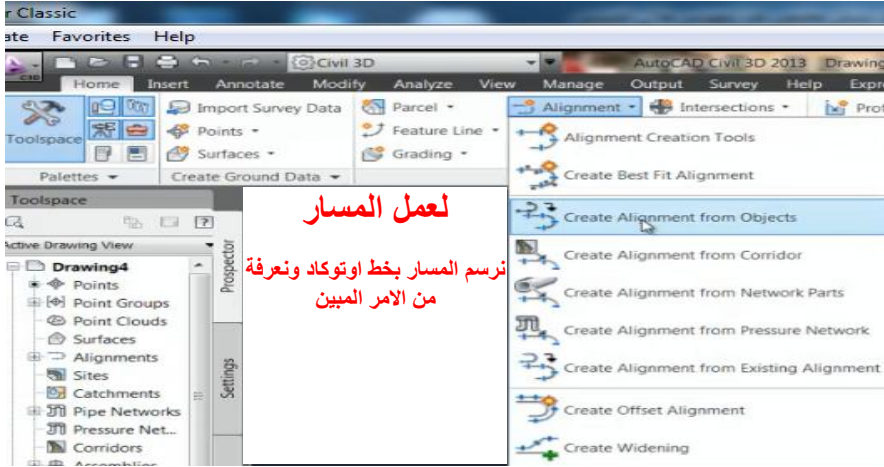
**AutoCAD® Civil 3D® 2013**

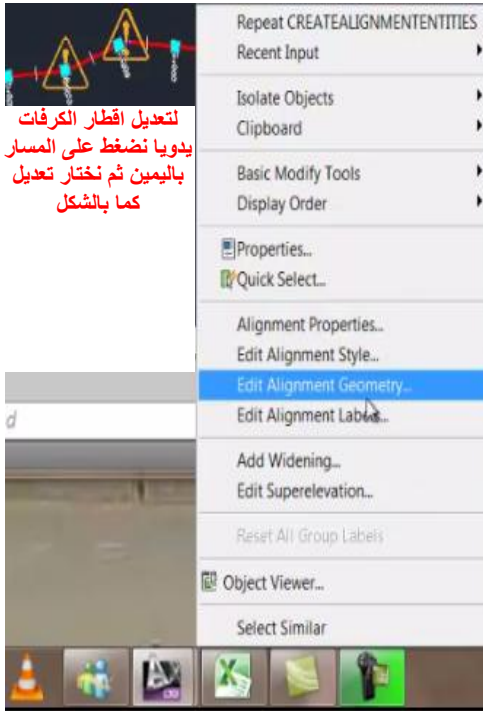


ملزمة لشرح السفل ثريدي 2013

م/ جلال العنسي





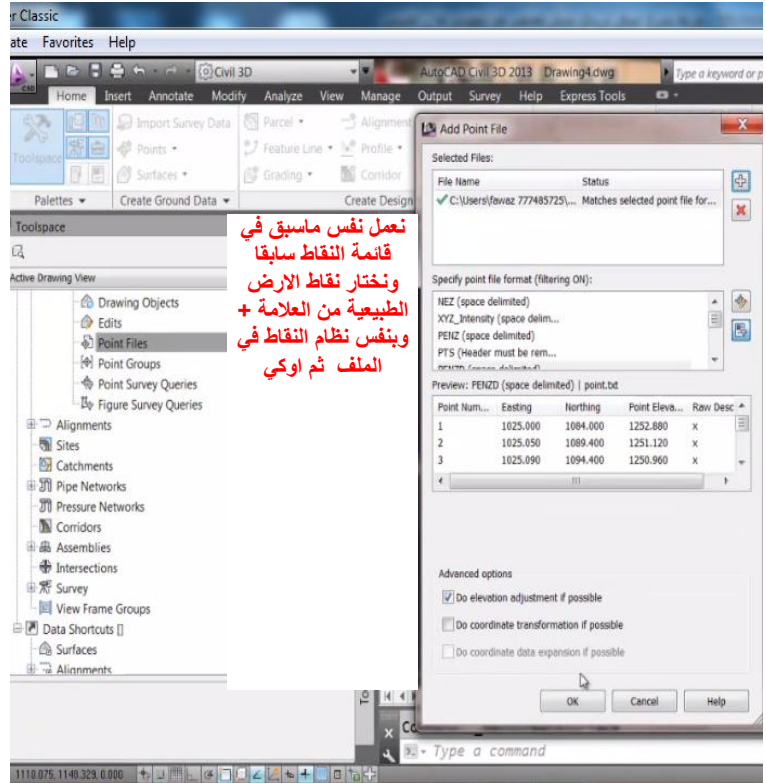
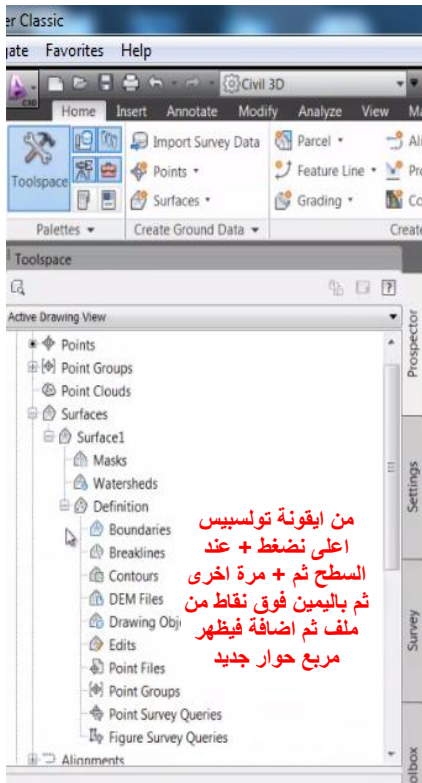
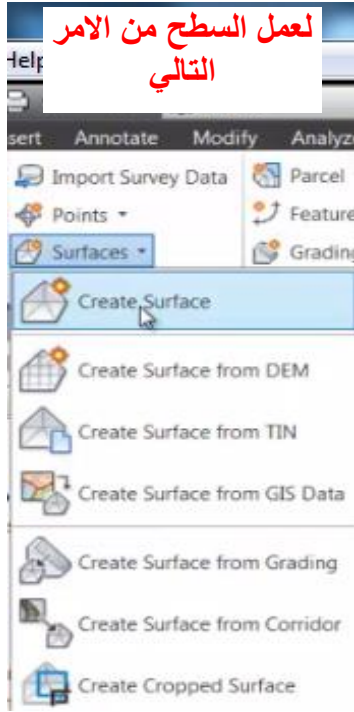


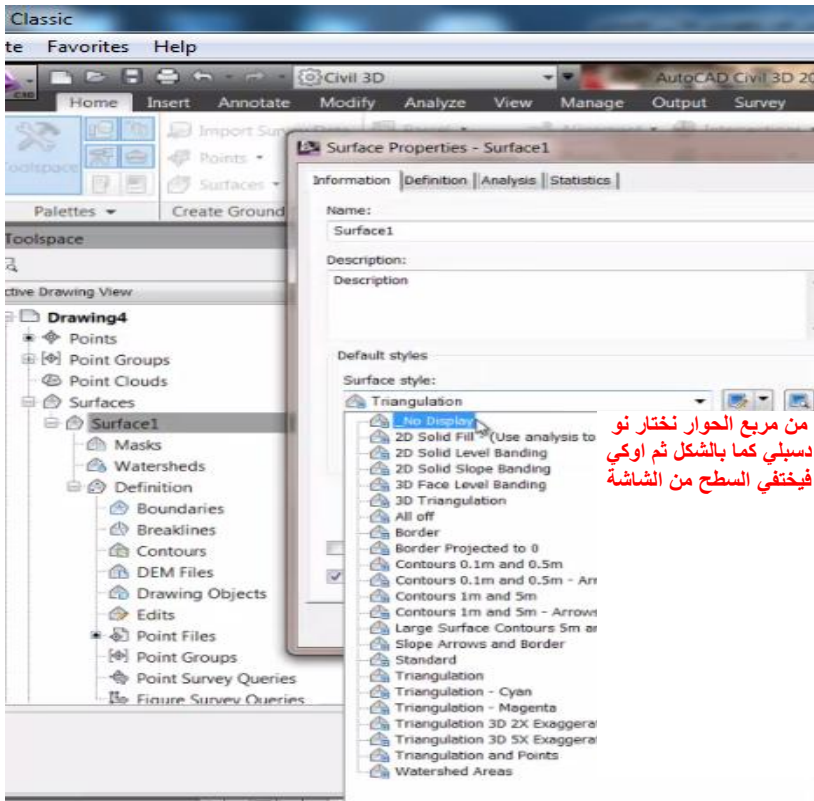
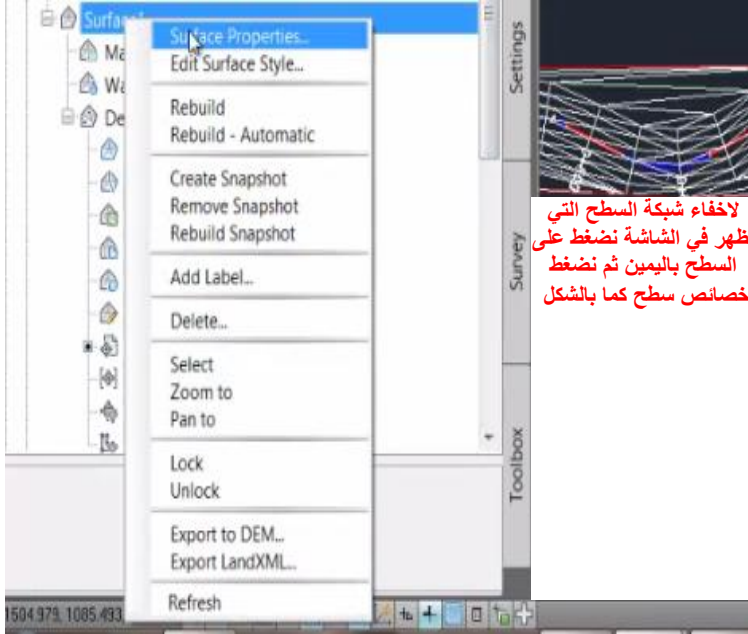
er Classic

gate Favorites Help

No.	Type	Tangency Constraint	Parameter Cons...	Parameter...	Length	Radius	Minimum Radius	Design Speed	Direction	Start Station	End Station	Delta angle	Chord leng
1	Line	Not Constrained (Fixed)		Two points	165.466m			60 km/h	S89° 26' 2...	0.000m	165.466m		19.398m
2	Curve	Constrained on Both Sides (...)		Radius	19.406m	200.000m	135.000m	60 km/h		165.468m	184.874m	005.559 (d)	
3	Line	Not Constrained (Fixed)		Two points	45.349m			60 km/h	N85° 00' 0...	184.874m	230.222m		40.502m
4	Curve	Constrained on Both Sides (...)		Radius	40.626m	150.000m	135.000m	60 km/h		230.222m	270.848m	015.518 (d)	
5	Line	Not Constrained (Fixed)		Two points	22.513m			60 km/h	N69° 28' 5...	270.848m	293.362m		26.043m
6	Curve	Constrained on Both Skl...		Radius	26.252m	60.000m	135.000m	60 km/h		293.362m	319.614m	025.069 ...	26.043m
7	Line	Not Constrained (Fixed)		Two points	151.060m			60 km/h	S85° 26' 5...	319.614m	470.674m		15.575m
8	Curve	Constrained on Both Skl...		Radius	15.638m	50.000m	135.000m	60 km/h		470.674m	486.312m	017.920 ...	15.575m
9	Line	Not Constrained (Fixed)		Two points	32.445m			60 km/h	S67° 31' 4...	486.312m	518.757m		46.361m
10	Curve	Constrained on Both Skl...		Radius	47.599m	60.000m	135.000m	60 km/h		518.757m	566.356m	045.454 ...	46.361m
11	Line	Not Constrained (Fixed)		Two points	58.343m			60 km/h	N67° 01' 0...	566.356m	624.699m		6.393m
12	Curve	Constrained on Both Skl...		Radius	6.442m	15.000m	135.000m	60 km/h		624.699m	631.141m	024.607 ...	6.393m
13	Line	Not Constrained (Fixed)		Two points	125.337m			60 km/h	S88° 22' 3...	631.141m	756.478m		2.439m
14	Curve	Constrained on Both Skl...		Radius	2.442m	15.000m	135.000m	60 km/h		756.478m	758.920m	009.326 ...	2.439m
15	Line	Not Constrained (Fixed)		Two points	75.869m			60 km/h	S79° 02' 5...	758.920m	834.789m		8.066m
16	Curve	Constrained on Both Skl...		Radius	8.166m	15.000m	135.000m	60 km/h		834.789m	842.955m	031.194 ...	8.066m
17	Line	Not Constrained (Fixed)		Two points	158.470m			60 km/h	N69° 45' 2...	842.955m	1001.425m		

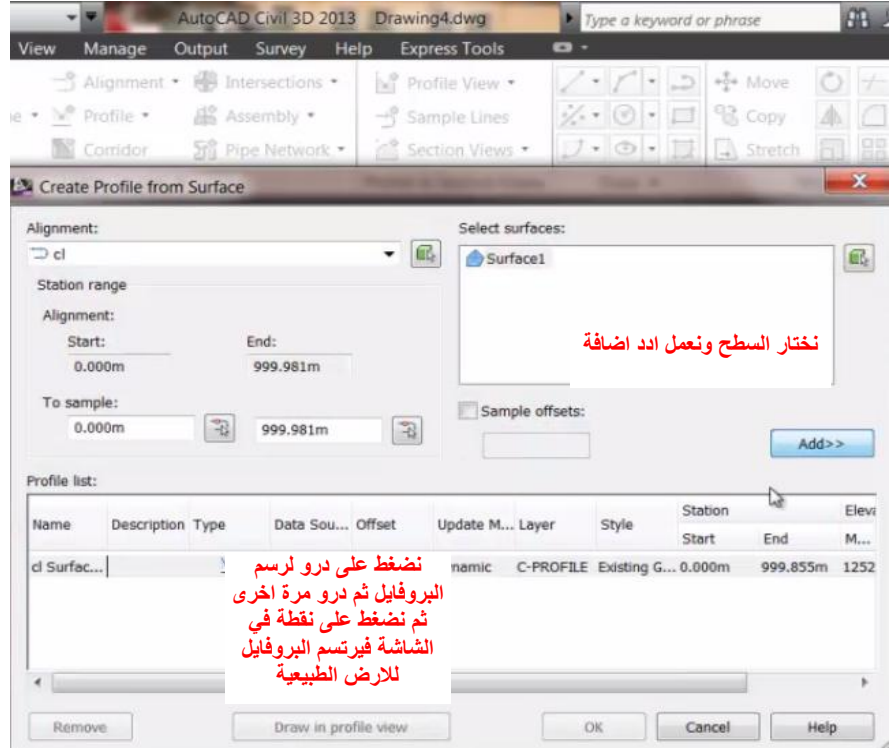
لتعديل اقطار الكرفات بدويا نضغط نقرتين على القطر ونكتب القطر الجديد الذي نريده كما بالشكل



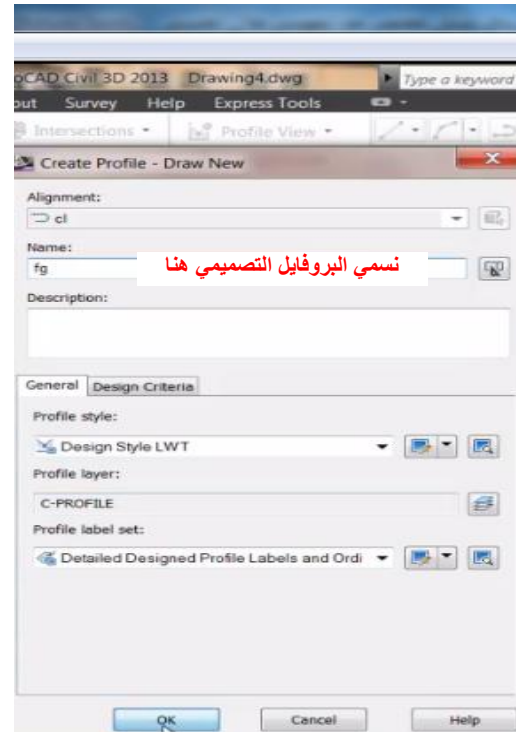
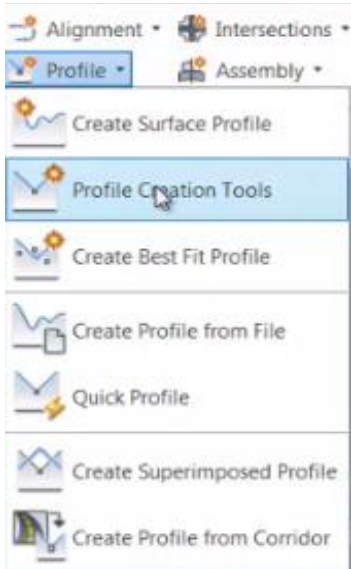


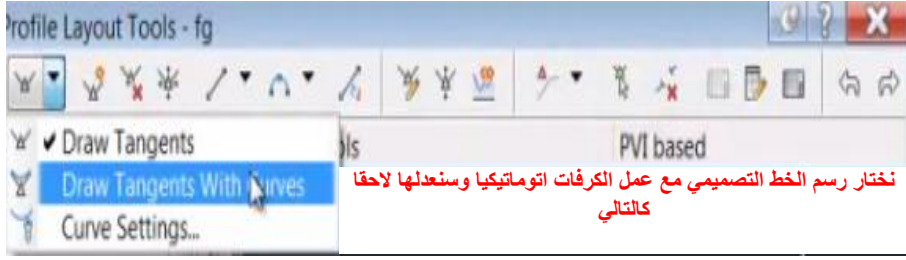
## لعمل البروفائل

نختار كريت كما بالشكل

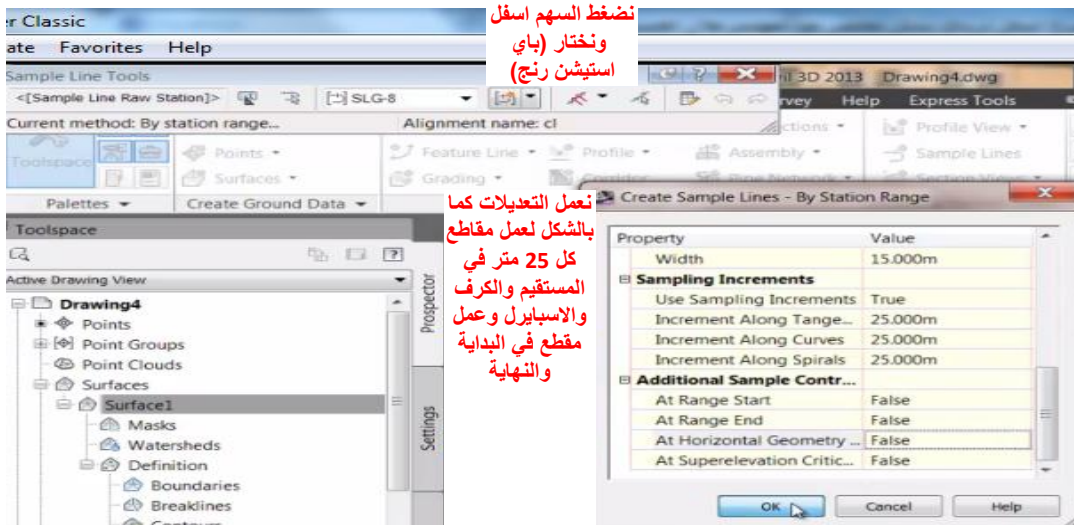
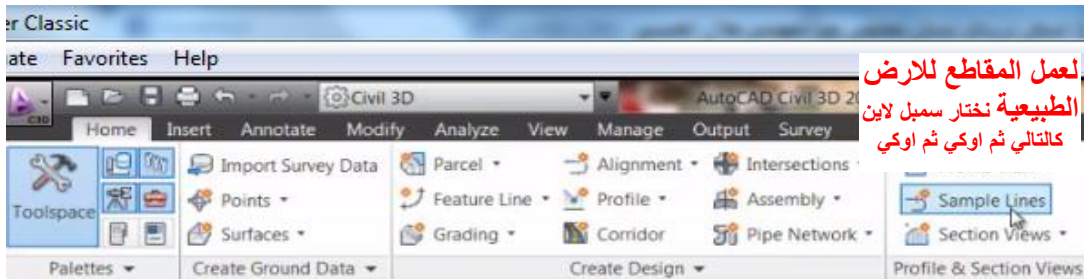
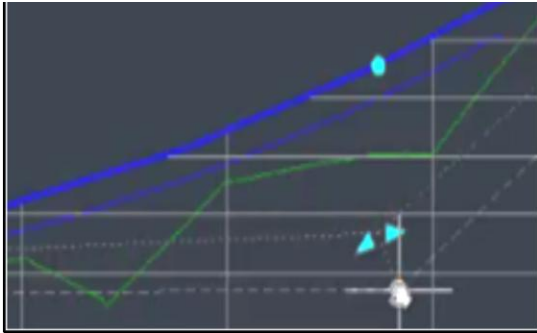


## لعمل البروفائل التصميمي كالتالي

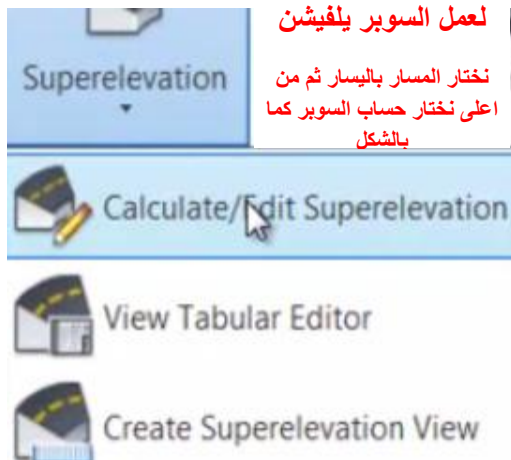
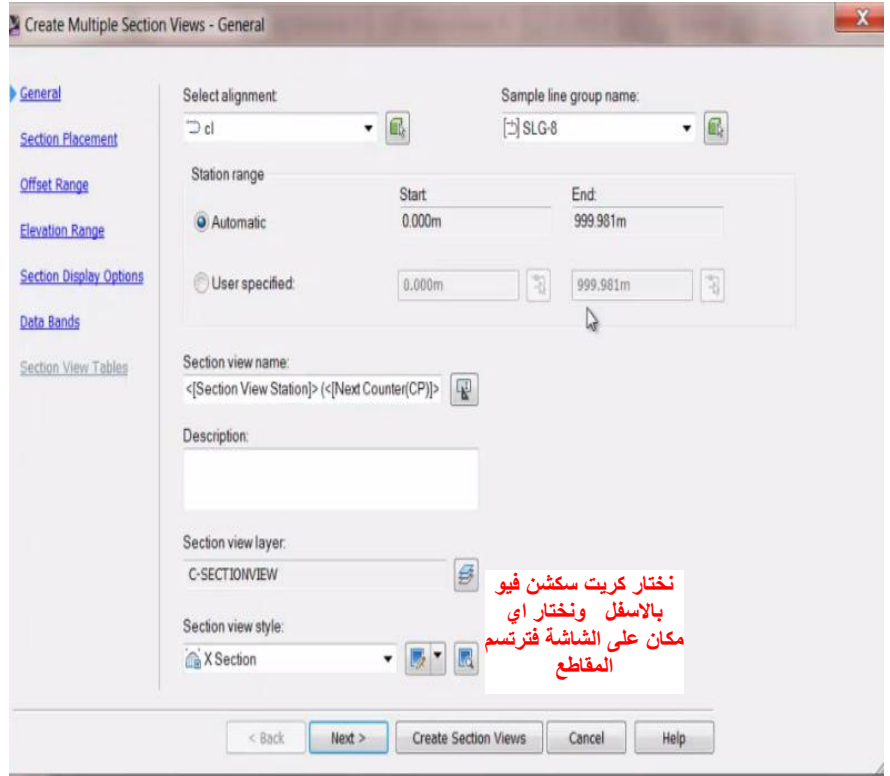
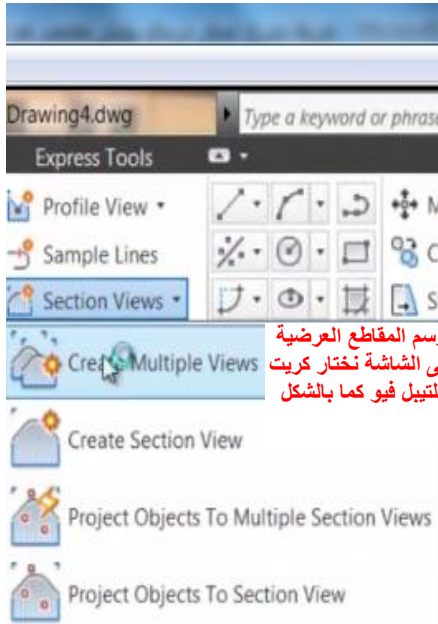


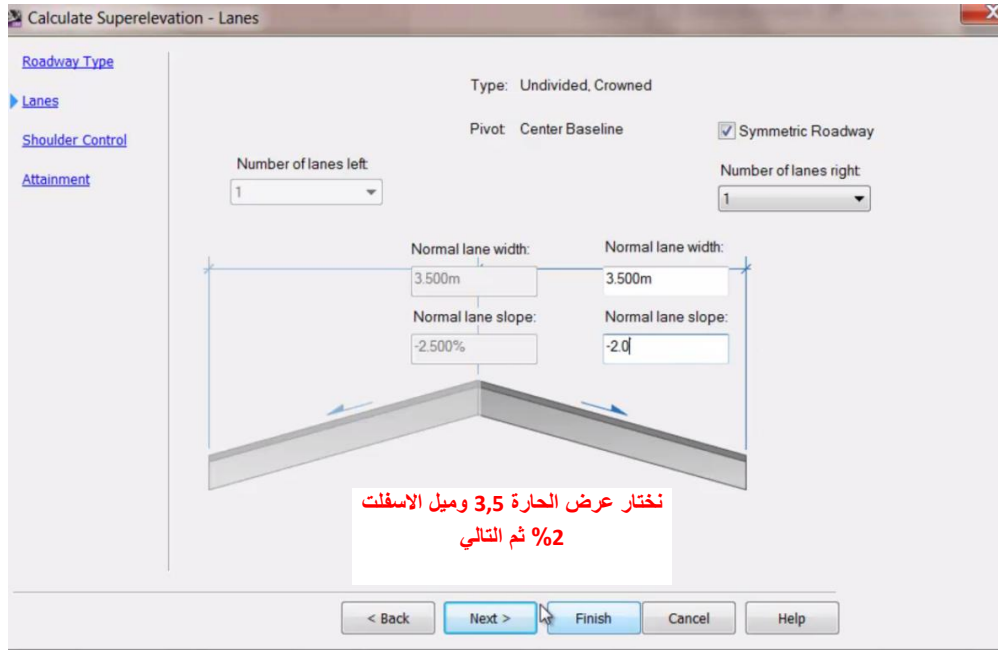
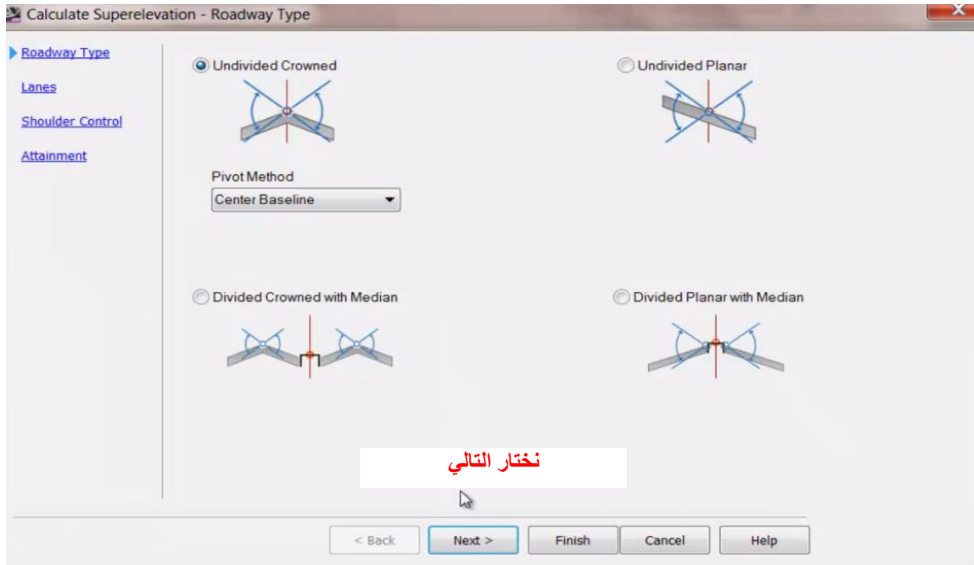


لتعديل الكرفات يمكن الضغط والسحب على نقاط الكرف مباشرة









Calculate Superelevation - Shoulder Control

Roadway Type  
Lanes  
Shoulder Control  
Attainment

Inside median shoulders

Calculate

Normal shoulder width: 5.000m

Normal shoulder slope: -2.500%

Shoulder slope treatment

Low side: Breakover removal

High side: Match lane slopes

Maximum shoulder rollover: 8.000%

Outside edge shoulders

Calculate

Normal shoulder width: 1.000m

Normal shoulder slope: -2.000%

Shoulder slope treatment

Low side: Match lane slopes

High side: Match lane slopes

Maximum shoulder rollover: 8.000%

نختار عرض الكتف 1 متر وميله 2% وطريقة عمل الميل من اخر نقطة للاسفلت اي مواصل لنفس ميل الاسفلت ثم التالي

< Back Next > Finish Cancel Help

Calculate Superelevation - Attainment

Roadway Type  
Lanes  
Shoulder Control  
Attainment

Design criteria file: C:\ProgramData\Autodesk\C3D 2013\enu\Data\Corridr

Superelevation rate table: AASHTO 2001 eMax 6%

Transition length table: 2 Lane

Attainment method: AASHTO 2001 Crowned Roadway


Transition formula for superelevation runoff

% on tangent for tangent-curve: 66.67%

% on spiral for spiral-curve: 100.00%

Curve smoothing

Apply curve smoothing Curve length: 20.000m

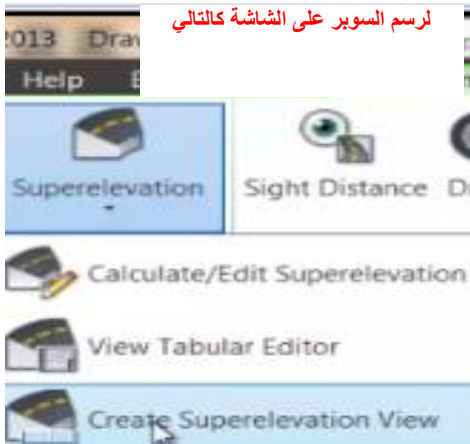
Automatically resolve overlap  This option applies only to the entire alignment.

نختار مربع لعمل حلول اوتوماتيك لمناطق التداخل للكرفات ثم انهاء

< Back Next > Finish Cancel Help

**نختار علامة صح اعلى اليمين للاغلاق**

Superelevation Curve	Start Station	End Station	Length	Overl...	Left Outside Sh...	Left Outside La...	Right Outside L...	Right Outside S...
End Full Super	178.208m				-3.900%	-3.900%	3.900%	3.900%
Curve.2								
Transition In Region	237.888m	237.888m	0.000m					
Begin Full Super	237.888m				-4.400%	-4.400%	4.400%	4.400%
Transition Out Region	263.182m	263.182m	0.000m					
End Full Super	263.182m				-4.400%	-4.400%	4.400%	4.400%
Curve.3								
Transition In Region	303.694m	303.694m	0.000m					
Begin Full Super	303.694m				6.000%	6.000%	-6.000%	-6.000%
Transition Out Region	309.281m	350.615m	41.333...					
Runoff	309.281m	340.281m	31.000...					
End Full Super	309.281m				6.000%	6.000%	-6.000%	-6.000%
End Curve	319.614m							
Reverse Crown	329.948m				2.000%	2.000%	-2.000%	-2.000%
Level Crown	340.281m				0.000%	0.000%	-2.000%	-2.000%
Runout	340.281m	350.615m	10.333...					
Level Crown	340.281m				0.000%	0.000%	-2.000%	-2.000%
Begin Normal ...	350.615m				-2.000%	-2.000%	-2.000%	-2.000%
Begin Normal ...	350.615m				-2.000%	-2.000%	-2.000%	-2.000%
Curve.4								
Transition In Region	439.673m	481.006m	41.333...					
Runout	439.673m	450.006m	10.333...					
End Normal Sh...	439.673m				-2.000%	-2.000%	-2.000%	-2.000%
End Normal Cr...	439.673m				-2.000%	-2.000%	-2.000%	-2.000%
Level Crown	450.006m				0.000%	0.000%	-2.000%	-2.000%
Runoff	450.006m	481.006m	31.000...					
Level Crown	450.006m				0.000%	0.000%	-2.000%	-2.000%
Reverse Crown	460.340m				2.000%	2.000%	-2.000%	-2.000%
Begin Curve	470.674m							
Begin Full Super	481.006m				6.000%	6.000%	-6.000%	-6.000%



**Create Superelevation View**

Superelevation view name: Superelevation View - {<[Next Counter(CP)]>}

Alignment: cl

Description:

Superelevation view layer: C-SUPERELEVATIONVIEW

Superelevation view style: Design View

Station range:

Data range:

Start: 0.000m End: 999.981m

User specified range:

0.000m 999.981m

Specify superelevation display options:

Lanes	Display	Color
Left Outside Lane	<input checked="" type="checkbox"/>	ByBlock
Right Outside Lane	<input checked="" type="checkbox"/>	ByBlock
Left Outside Shoulder	<input type="checkbox"/>	ByBlock
Right Outside Shoulder	<input type="checkbox"/>	ByBlock

نزيل مربعات رسم سوبر الكتف الشولدر ثم اوكي ونختار نقطة في اي مكان على الشاشة لرسم السوبر ويمكن التعديل عليه بالضغط والسحب للنقاط عليا في الشاشة

