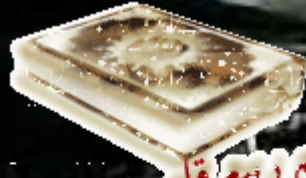


السلام عليكم

هذا العمل لوجه الله تعالى يراد به  
الدعاء

لي ولوالدي ولمن ساهم في نشر  
هذا العمل



اللهم اجعل القرآن العظيم ربيع قلبي  
ونور بصري وجلاء حزني  
وذهاب همي وغمي  
وذا ندي إلى جناتك جنات النعيم

كيفية تثبيت ويندوز vista&xp

نبدأ باسم الله



((تصيب xp))

ضع الـ cd في محرك الاقراص

عند تشغيل الجهاز

و عند ظهور الرسالة التالية

Press any key to boot from CD..

اضغط

ENTER

اضغط enter

ثم تظهر لك الشاشة التالية

Windows Setup

werewolf

انتظر حتى ينتهي التحميل من الأسفل



Setup is loading files (Windows Executive)...

تابع الصور كما يلي

Windows XP Home Edition Setup

WEREWOLF

Welcome to Setup.

This portion of the Setup program prepares Microsoft(R) Windows(R) XP to run on your computer.

- To set up Windows XP now, press ENTER.
- To repair a Windows XP installation using Recovery Console, press R.
- To quit Setup without installing Windows XP, press F3.

R

بعد انتهاء التحميل اذا اردت ان تصلح الويندوز السابق اضغط

ENTER

اذا اردت ان تنسخ نسخة جديدة من الويندوز اضغط

F3

اذا اردت الخروج من تنصيب ويندوز اضغط

ENTER=Continue R=Repair F3=Quit

Windows XP Licensing Agreement

Microsoft(r) Windows(r) XP Home Edition  
END-USER LICENSE AGREEMENT

WEREWOLF

باختصار ما في حد راج يقرأ هاي لذلك اضغط

F8=iagree

IMPORTANT-READ CAREFULLY: This End-User License Agreement ("EULA") is a legal agreement between you (either an individual or a single legal entity) and the manufacturer ("Manufacturer") of the computer system or computer system component ("HARDWARE") with which you acquired the Microsoft software product(s) identified above ("SOFTWARE"). The SOFTWARE includes Microsoft computer software, and may include associated media, printed materials, "online," or electronic documentation and Internet based services. Note, however, that any software, documentation, or web services that are included in the SOFTWARE, or accessible via the SOFTWARE, and are accompanied by their own license agreements or terms of use are governed by such agreements rather than this EULA. The terms of a printed, paper EULA, which may accompany the SOFTWARE, supersede the terms of any on-screen EULA. This EULA is valid and grants the end-user rights ONLY if the SOFTWARE is genuine and a genuine Certificate of Authenticity for the SOFTWARE is included. For more information on identifying whether your software is genuine, please see <http://www.microsoft.com/piracy/bestofell>.

By installing, copying, downloading, accessing or otherwise using the SOFTWARE, you agree to be bound by the terms of this EULA. If you do not agree to the terms of this EULA, you may not use or

F8=I agree ESC=I do not agree PAGE DOWN=Next Page

Windows XP Home Edition Setup

The following list shows the existing partitions and unpartitioned space on this computer.

Use the UP and DOWN ARROW keys to select an item in the list.

- To set up Windows XP on the selected item, press ENTER.
- To create a partition in the unpartitioned space, press C.
- To delete the selected partition, press D.

16379 MB Disk 0 at Id 0 on bus 0 on atapi [MBR]

Unpartitioned space	16379 MB
---------------------	----------

D اذا ظهرت الاقراص قم بالضغط على

L ثم

ENTER ثم

اتبع التعليمات

في الاعلى

ENTER=Install C=Create Partition F3=Quit

### Windows XP Professional Setup

The following list shows the existing partitions and unpartitioned space on this computer.

Use the UP and DOWN ARROW keys to select an item in the list.

- To set up Windows XP on the selected item, press ENTER.
- To create a partition in the unpartitioned space, **press C.**
- To delete the selected partition, press D.

16379 MB Disk 0 at Id 0 on bus 0 on atapi [MBR]

Unpartitioned space 16379 MB

**C** لتقسيم الاقراص اضغط

ENTER=Install C=Create Partition F3=Quit

### Windows XP Home Edition Setup

You asked Setup to create a new partition on 16379 MB Disk 0 at Id 0 on bus 0 on atapi [MBR].

- To create the new partition, enter a size below and press ENTER.
- To go back to the previous screen without creating the partition, press ESC.

The minimum size for the new partition is 8 megabytes (MB).  
The maximum size for the new partition is 16371 megabytes (MB).  
Create partition of size (in MB): **16371**

حدد حجم محرك الاقراص

**ENTER** ثم اضغط

ENTER=Create ESC=Cancel

Windows XP Home Edition Setup

The following list shows the existing partitions and unpartitioned space on this computer.

Use the UP and DOWN ARROW keys to select an item in the list.

- To set up Windows XP on the selected item, press ENTER.
- To create a partition in the unpartitioned space, press C.
- To delete the selected partition, press D.

16379 MB Disk 0 at Id 0 on bus 0 on atapi [MBR]

C:	Partition1 [New <Raw>]	8001 MB < 8001 MB free>
	Unpartitioned space	8378 MB



بعد التقسيم يظهر ما يلي

ENTER ثم اضغط

ENTER=Install D=Delete Partition F3=Quit

Windows XP Home Edition Setup

WEREWOLF

A new partition for Windows XP has been created on

16379 MB Disk 0 at Id 0 on bus 0 on atapi [MBR].

This partition must now be formatted.

From the list below, select a file system for the new partition. Use the UP and DOWN ARROW keys to select the file system you want, and then press ENTER.

If you want to select a different partition for Windows XP, press ESC.

- Format the partition using the NTFS file system <Quick>
- Format the partition using the FAT file system <Quick>
- Format the partition using the NTFS file system
- Format the partition using the FAT file system

افضل اختيار هو

بعد الاختيار اضغط

ENTER

ENTER=Continue ESC=Cancel

Windows XP Home Edition Setup

Please wait while Setup formats the partition

C: Partition1 [New <Raw>] 16370 MB < 16370 MB free>  
on 16379 MB Disk 0 at Id 0 on bus 0 on atapi [MBR1].

تبدأ عملية الفرمطة

Setup is formatting...

20%



Windows XP Home Edition Setup

WEREWOLF

Please wait while Setup copies files  
to the Windows installation folders.  
This might take several minutes to complete.

Setup is copying files...

2%



تبدأ عملية نسخ الملفات

انتظر حتى ينتهي

Copying: autochk.exe

Windows XP Home Edition Setup

This portion of Setup has completed successfully.  
If there is a floppy disk in drive A:, remove it.  
To restart your computer, press ENTER.  
When your computer restarts, Setup will continue.

Your computer will reboot in 13 seconds...



الآن تتم عملية اعادة التشغيل



ENTER=Restart Computer

Press any key to boot from CD..

تظهر هذه الصورة مرة اخرى ولكن لا تضغط ENTER



Collecting information

Dynamic Update

Preparing installation

**Installing Windows**

Finalizing installation

Setup will complete in approximately:  
39 minutes

## An exciting new look

Windows® XP Home Edition sports a brand-new visual design that combines a sleek look, clean lines, and appealing colors with a task-oriented design and exceptionally streamlined navigation.

The redesigned Start menu makes it easier to find important information and to access the programs you use most frequently.

By automatically cleaning up the notification area of the taskbar and grouping related taskbar items, Windows XP makes it easier to switch between programs and to open, view, or close multiple items at the same time.

تظهر هذه الشاشة انتقال التحديث

- Collecting information
- Dynamic Update
- Preparing installation
- Installing Windows**
- Finalizing installation

Setup will complete in approximately:  
37 minutes

## Explore your creative side with photos and videos

Windows® XP enhances your ability to share photos and videos with your friends and family. You can easily download pictures from your digital camera into the My Pictures folder.

The improved My Pictures folder shows thumbnail views of your pictures, so it's easy to find the ones you want. And the tasks in the My Pictures folder help you publish your favorite pictures to the Web or send them through e-mail to quickly share with friends and family. You can even use the Photo Printing Wizard to easily print photos in any size and quantity.

انتظر... انتظر... انتظر

Installing Devices



- Collecting information
- Dynamic Update
- Preparing installation
- Installing Windows**
- Finalizing installation

Setup will complete approximately:  
33 minutes

التالي  
**NEXT**

**Windows XP Home Edition Setup**

### Regional and Language Options

You can customize Windows XP for different regions and languages.



 Regional and Language Options allow you to change the way numbers, dates, currencies and the time are displayed. You can also add support for additional languages, and change your location setting.

The Standards and formats setting is set to English (United States), and the location is set to United States.

To change these settings, click Customize.

---

Text Input Languages allow you to enter text in many different languages, using a variety of input methods and devices.

Your default text input language and method is: US keyboard layout

To view or change your current configuration, click Details.



- Collecting information
- Dynamic Update
- Preparing installation
- Installing Windows**
- Finalizing installation

Setup will complete approximately:  
33 minutes

## Windows XP Home Edition Setup

### Your Product Key

Your Product Key uniquely identifies your copy of Windows XP.



The 25-character Product Key appears on the lower section of your Certificate of Authenticity.

Type the Product Key below:

اكتب الرقم السري

Product Key:

WER · EWO · LFM · UST · AFA

اضغط

**NEXT**

< Back

Next >

- Collecting information
- Dynamic Update
- Preparing installation
- Installing Windows**
- Finalizing installation

Setup will complete approximately:  
33 minutes

**Windows XP Home Edition Setup**

**What's your computer's name?**  
Please provide a name for your computer using the guidelines below.

Choose a name for your computer that will help you identify it on your home network, if you have one. Each computer on your network must have a unique name.

You can name your computer based on its owner or location, for example "DAVID" or "FAMILYROOM." The computer name below must be no more than 15 characters long and cannot contain special characters or spaces.

This computer's name is:

اضغط

**NEXT**

< Back    Next >

- Collecting information
- Dynamic Update
- Preparing installation
- Installing Windows
- Finalizing installation


Setup will complete approximately:  
33 minutes

**Windows XP Home Edition Setup**


**Date and Time Settings**  
Set the correct date and time for your Windows computer.

**حدد الوقت**

Date & Time

 Sunday, April 25, 2004 10:31:27 AM

Time Zone

 (GMT) Greenwich Mean Time : Dublin, Edinburgh, Lisbon, London

Automatically adjust clock for daylight saving changes

**اضغط**

**NEXT**

< Back **Next >**

Collecting information

Dynamic Update

Preparing installation

Installing Windows

Finalizing installation

Setup will complete approximately:  
30 minutes

## Windows XP Home Edition Setup

### Networking Settings

Installing network software allows you to connect to other computers, networks, and the Internet.



Choose whether to use typical or custom settings:

**Typical settings**

Creates network connections using the Client for Microsoft Networks, File and Print Sharing for Microsoft Networks, QoS Packet Scheduler, and the TCP/IP transport protocol with automatic addressing.

**Custom settings**

Allows you to manually configure networking components.

اضغط

NEXT

< Back

Next >



- Collecting information
- Dynamic Update
- Preparing installation
- Installing Windows**
- Finalizing installation

Setup will complete in approximately:  
24 minutes

Copying files...



## Have more fun with games

DirectX® 8 makes a computer running Windows® XP Home Edition the ideal platform for playing the latest games, as well as running other programs that feature full-color graphics, video, 3-D animation, or surround sound.

With enhanced network support, you can play games with your family or housemates over a home network, or challenge an anonymous competitor over the Internet.

انظر حتى ينتهي



WEREWOLF

MUSTAFA (M.U.S.)



Please wait...

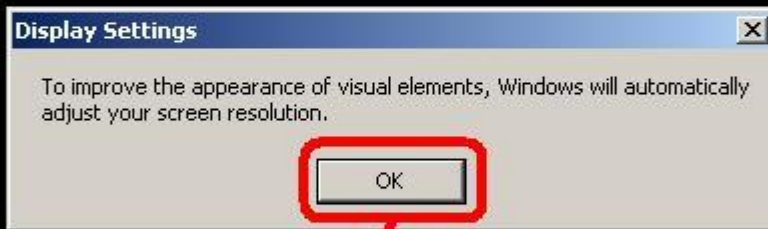
Copyright © 1985-2001  
Microsoft Corporation

.....تابع

Microsoft®

WEREWOLF

MUSTAFA (M.U.S.)



اضغط

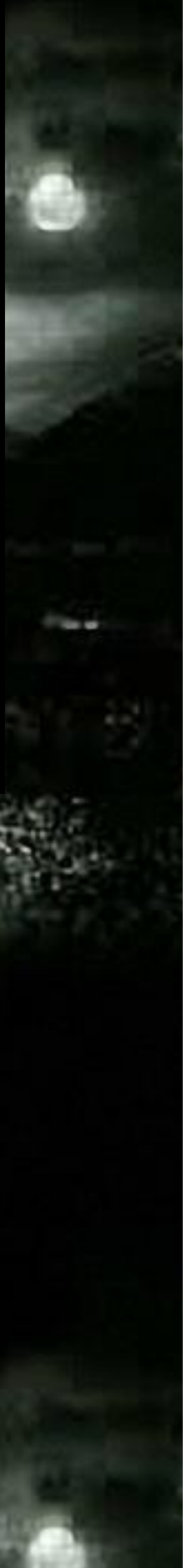
OK



اضغط  
OK

WEREWOLF

MUSTAFA (M.U.S)



# Welcome to Microsoft Windows

Thank you for purchasing Microsoft Windows XP.

Let's spend a few minutes setting up your computer.

# WEREWOLFMUSTAFA(M.U.S)

To continue, click Next.

اضغط  
**NEXT**



For help,  
click here or press F1.

Next

## Help protect your PC

With Automatic Updates, Windows can routinely check for the latest important updates for your computer and install them automatically. These updates can include security updates, critical updates, and service packs.



• **Help protect my PC by turning on Automatic Updates now**  
(recommended)



• **Not right now**

If you haven't turned on Automatic Updates, your computer is more vulnerable to viruses and other security threats.

No information is collected that can be used to identify you or contact you.  
Please read the [Windows Update privacy statement](#).

تم  
**NEXT**



For help,  
click here or press F1.

Back

Next

## Ready to activate Windows?

To help reduce software piracy, please activate your copy of Windows now.

**You don't need to give your name or other personal information when you activate Windows.**

If you wait to activate, you can still use Windows, but you will receive periodic reminders. After 30 day(s), you must activate Windows before you can continue to use it.

Microsoft is committed to your privacy. For more information, [read the Windows Product Activation Privacy Statement](#).

Do you want to activate Windows now?

- Yes, activate Windows over the Internet now
- No, remind me every few days

اضغط

NO

تم

NEXT



For help, click here or press F1.

Back

Next

Microsoft Windows XP WEREWOLF

## Ready to register with Microsoft?

Register online with Microsoft, and we'll notify you of new products, product updates, events, promotions, and special offers that you may be interested in. **Registration is optional.**

**Are you ready to register online with Microsoft?**

- Yes, I'd like to register with Microsoft now
- No, not at this time

Microsoft is committed to protecting your privacy and does not share your information. Show me the [Windows Registration Privacy Statement](#).

اضغط

NO

تم

NEXT

For help, click here or press F1.

Back Next

## Who will use this computer?

Type the name of each person who will use this computer. Windows will create a separate user account for each person so you can personalize the way you want Windows to organize and display information, protect your files and computer settings, and customize the desktop.

Your name:

2nd User:

3rd User:

4th User:

5th User:

حدد حسب عدد المستخدمين اذا كان

واحد اكتب ي الاسم الاول فقط اما اذا

..اثنين فحدد اسمين وهكذا

These names will appear on the Welcome screen in alphabetical order. When you start Windows, simply click your name on the Welcome screen to begin. If you want to set passwords and limit permissions for each user, or add more user accounts after you finish setting up Windows, just click **Control Panel** on the **Start** menu, and then click **User Accounts**.

اكتب الاسم ومن ثم اضغط

**NEXT**



For help,  
click here or press F1.

Back

Next

## Thank you!

Congratulations, you're ready to go! Here's what you just accomplished:

Your computer is configured for Internet access.

To learn about the exciting new features of Windows XP, take the product tour. You can also find useful information in the **Help and Support** Center. These options are located on the **Start** menu.


## WEREWOLF MUSTAFA (M.U.S.)

اضغط

# FINISH



For help,  
click here or press F1.

Finish 



مبروك الويندوز الجديد

WEREWOLF

MUSTAFA

((M.U.S))

Recycle Bin

start

10:17 PM

اعذروني اخواني ان اخطات في اي  
حاجة

او نسيت ان اذكر شي ولكن هذه  
معظم

الخطوات شيوعاً

وإذا اختلفت معك في شيء فليس  
صعباً

ان تحل المشكلة بنفسك  
((ربنا لا تؤاخذنا ان نسينا او  
اخطانا))  
((تم بحمد الله))

---

---

((تنصيب VISTA))

ضع الـCD في محرك الاقراص ثم

WEREWOLF

MUSTAFA (M.U.S)

انتظر



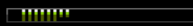
Windows is loading files...



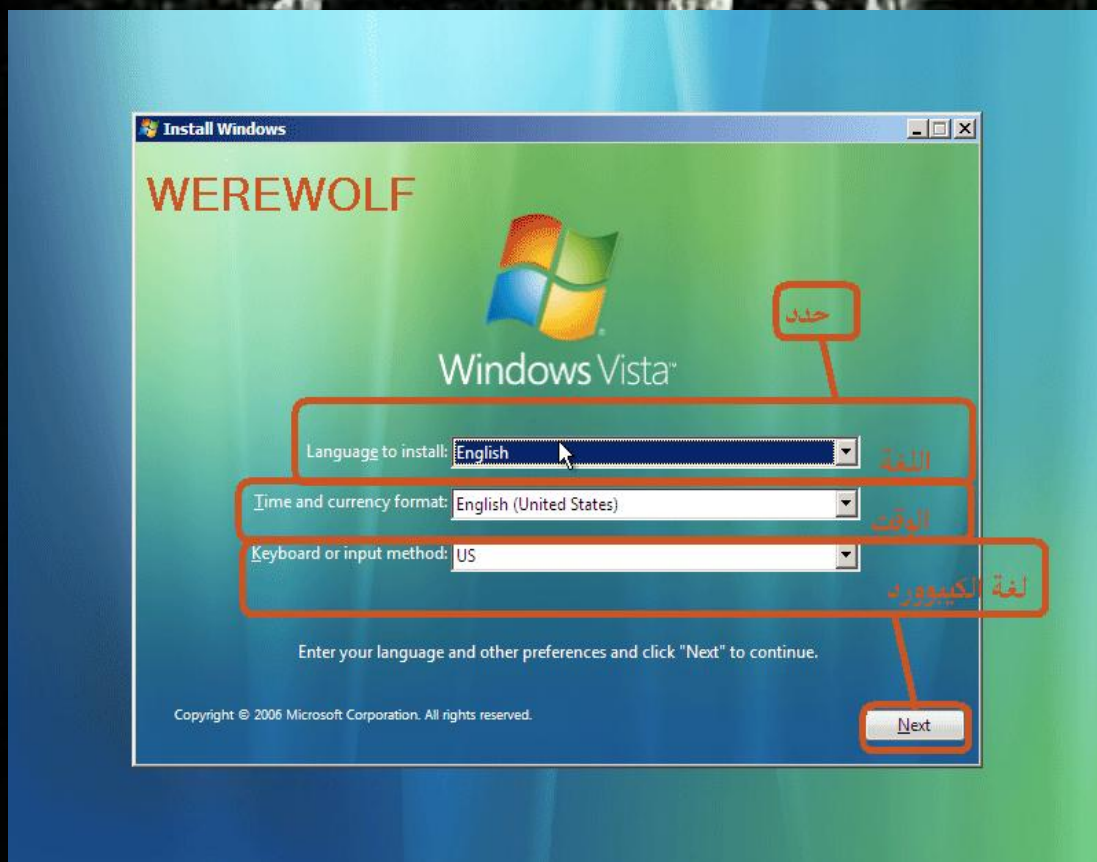
WEREWOLF

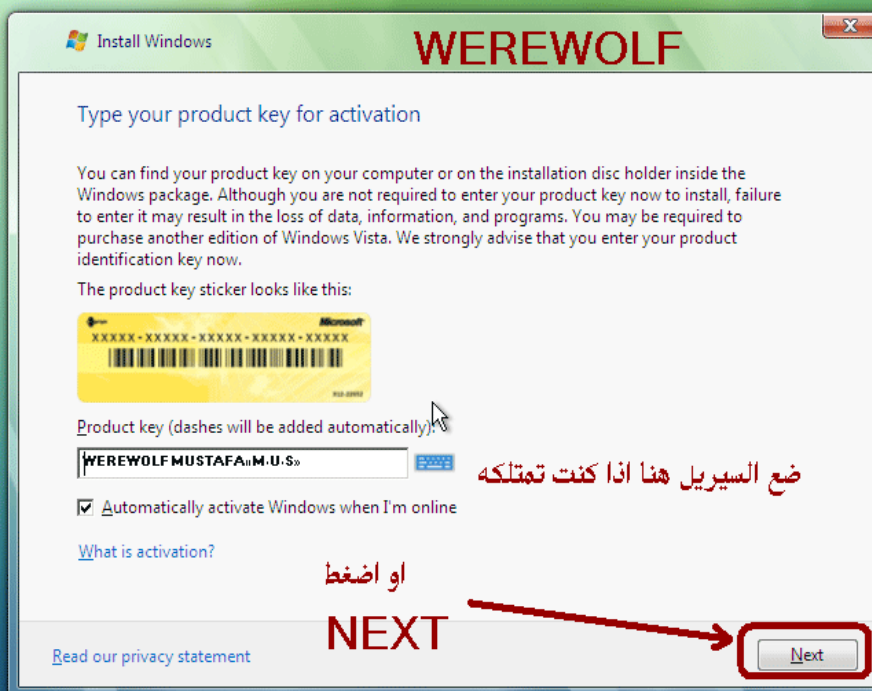
MUSTAFA (M.U.S)

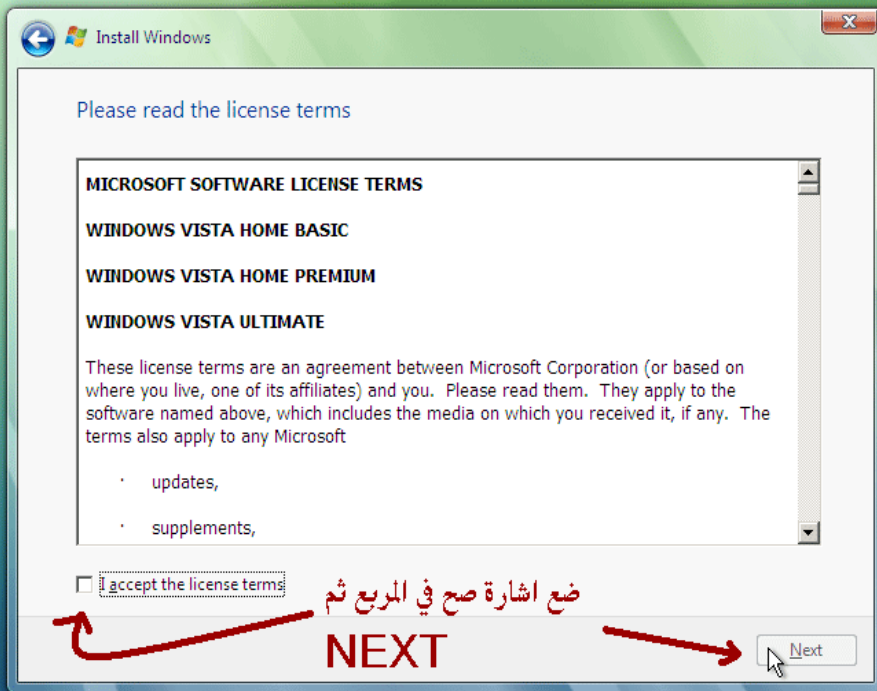
انتظر ((^\_^))



© Microsoft Corporation



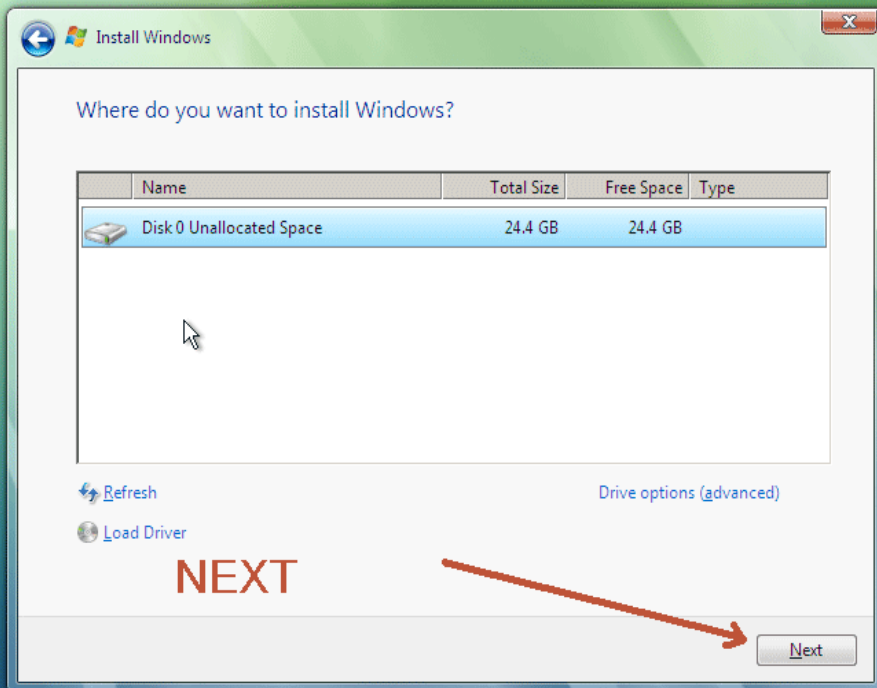




1 Collecting information 2 Installing Windows

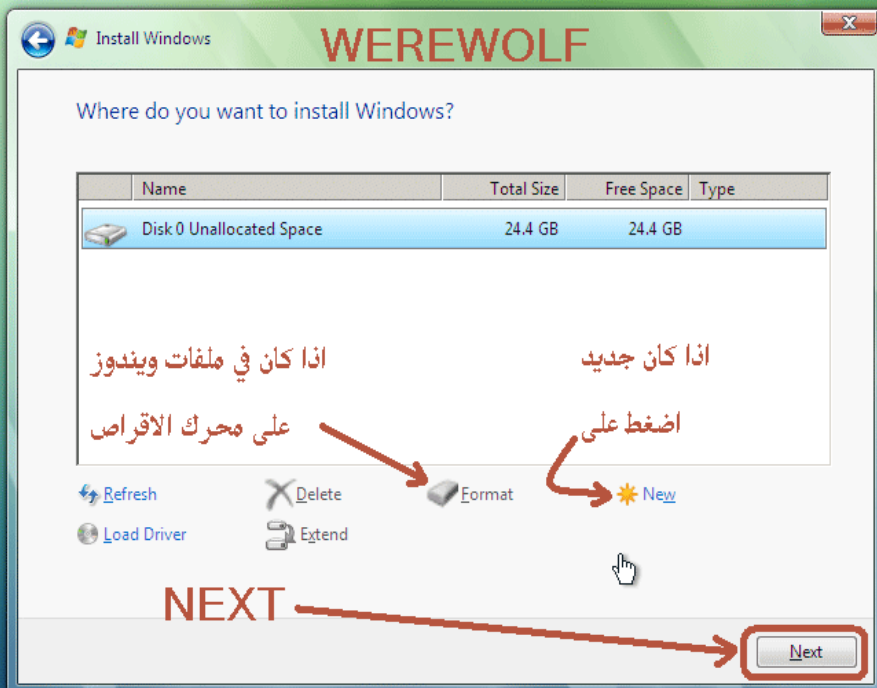


1 Collecting information 2 Installing Windows



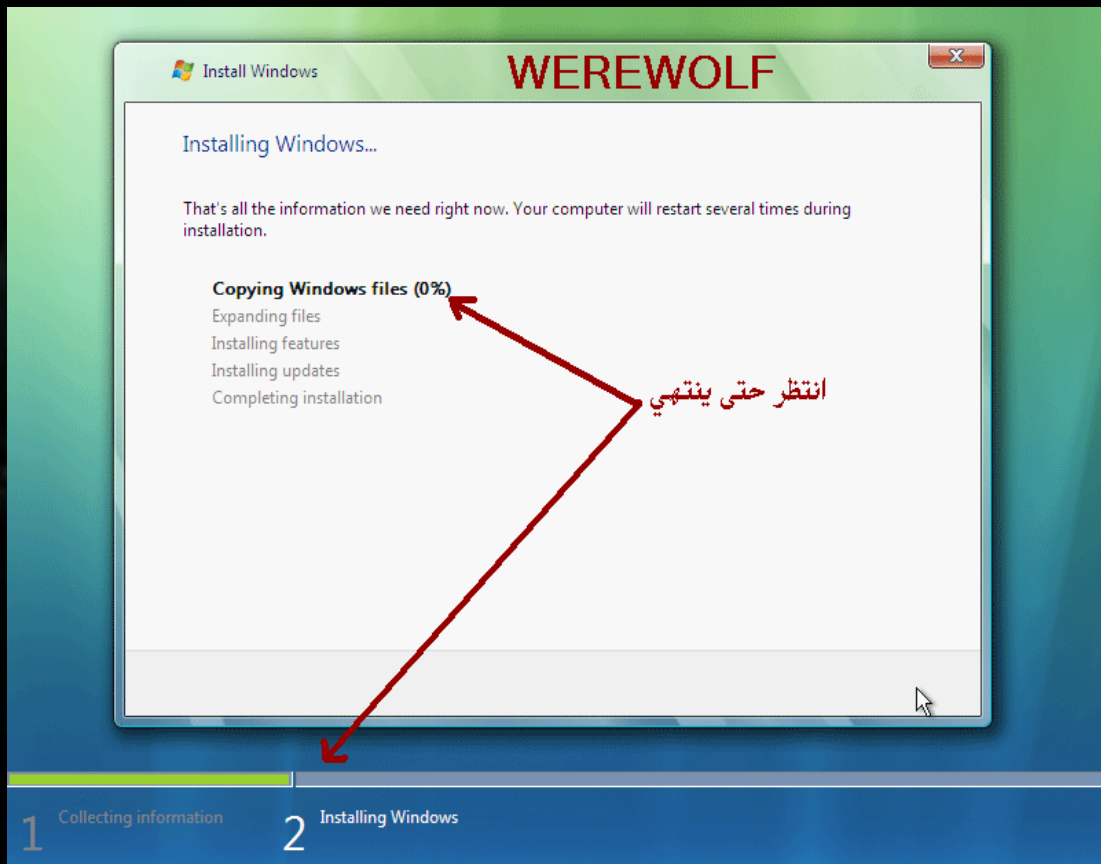
1 Collecting information

2 Installing Windows



1 Collecting information

2 Installing Windows



WEREWOLF

Install Windows

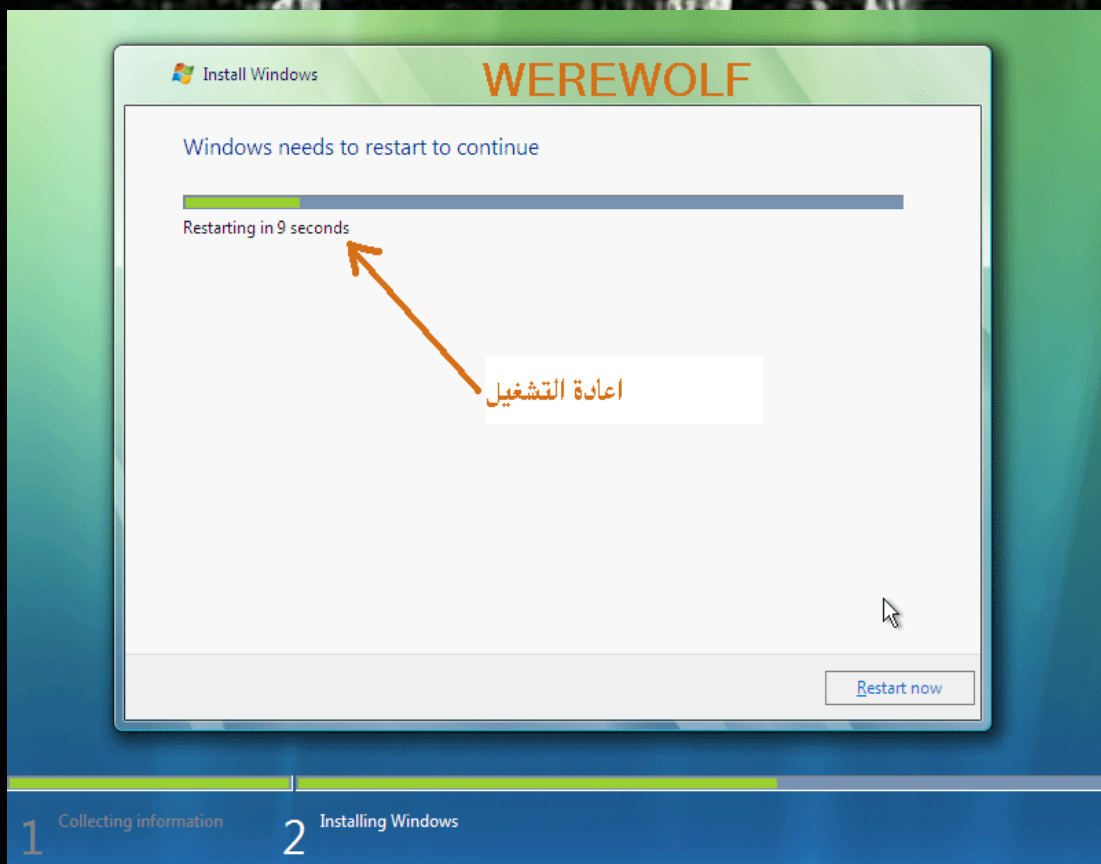
Installing Windows...

That's all the information we need right now. Your computer will restart several times during installation.

**Copying Windows files (0%)**

- Expanding files
- Installing features
- Installing updates
- Completing installation

انتظر حتى ينتهي



WEREWOLF

Install Windows

Windows needs to restart to continue

Restarting in 9 seconds

اعادة التشغيل

Restart now



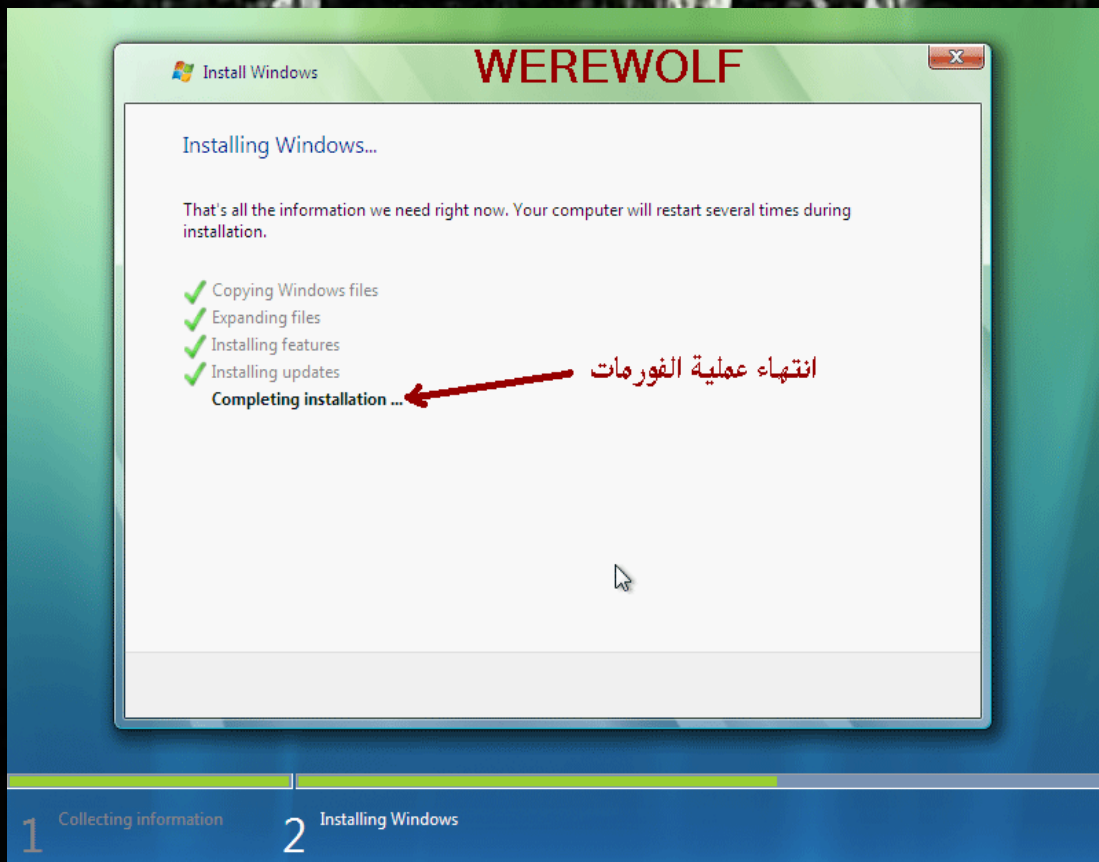


Please wait a moment while windows prepares to start for the first time..

انتظر حتى ينتهي من تحضير نفسه للعمل اول مرة

WEREWOLF

MUSTAFA (M.U.S)



# WEREWOLF

Set Up Windows

## Choose a user name and picture

Your user name and picture represent your [user account](#). The account you create here is a computer administrator account. (You can create more accounts later in Control Panel.)

Type a user name (for example, John):  
 اسم المستخدم

Type a password (recommended):  
 الباسوورد

Retype your password:  
 اعادة كتابة الباسوورد

Type a password hint (optional):  
 معلومات تذكرك بالباسوورد

Choose a picture for your user account:

اختر الصورة



NEXT

Next

# WEREWOLF

Set Up Windows

## Type a computer name and choose a desktop background

Type a [computer name](#) (for example, Office-PC):

اختر خلفية سطح المكتب

Choose a desktop background (you can make changes later in Control Panel):



اضغط

NEXT


Next

## WEREWOLF

Set Up Windows

### Help protect Windows automatically

**اضغط هنا** →

- 
**Use recommended settings**  
 Install important and recommended updates, help make Internet browsing safer, and check online for solutions to problems.
- 
**Install important updates only**  
 Only install security updates and other important updates for Windows.
- 
**Ask me later**  
 Until you decide, your computer might be vulnerable to security threats.

[Learn more about each option](#)

When you use recommended settings or install updates only, some information is sent to Microsoft. The information is not used to identify you or contact you. [Read our privacy statement](#)

## WEREWOLF

Set Up Windows

### Review your time and date settings

**حدد الوقت والتاريخ**

Time zone:  
 (GMT-08:00) Pacific Time (US & Canada)
   
 Automatically adjust clock for Daylight Saving Time

Date:

Time: 3:19:40 PM

**ثم** **NEXT**

**Next**

Su	Mo	Tu	We	Th	Fr	Sa
28	29	30	31	1	2	3
4	5	6	7	8	9	10
11	12	13	14	15	16	17
18	19	20	21	22	23	24
25	26	27	28	1	2	3
4	5	6	7	8	9	10

Set Up Windows

Select your computer's current location

Windows has detected that this computer is connected to a network. Windows will automatically apply the correct network settings for the location.

 **Home** للاستخدام البيتي  
Choose this for a home or similar location. Your computer is discoverable and you can see other computers and devices.

 **Work** للعمل  
Choose this for a workplace or similar location. Your computer is discoverable and you can see other computers and devices.


 **Public location** بشكل عام  
Choose this for airports, coffee shops, and other public places or if you are directly connected to the Internet. Discovery of other computers and devices is limited.

If you aren't sure, select Public location.

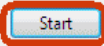
**اختار المناسب**

WEREWOLF

Set Up Windows



Thank you



# WEREWOLF

## Getting it done just got more fun

Time is precious. More than ever, you need a system that is simple, easy, natural, and enjoyable—so you can get things done and focus on what matters most in your life.

انتظر

انتظر

انتظر



Please wait while Windows checks your computer's performance.

About Windows

ميراثك ويندوز فيستا  
Windows Vista Ultimate  
© 2006 Microsoft Corporation

Microsoft® Windows®  
Version 6.0.6001.1: Service Pack 1, July 24, 2006  
Copyright © 2007 Microsoft Corporation. All rights reserved.  
The Windows Vista™ Ultimate operating system and its user interface are protected by trademark and other pending or existing intellectual property rights in the United States and other countries.  
Evaluation copy. Expires 4/7/2008 4:59 PM

WEREWOLF  
MUSTAFA

This product is licensed under the [Microsoft Software License Terms](#) to:  
(M.U.S)

Physical memory available to Windows®: 2,095,492 KB

OK

اعذروني اخواني ان اخطات في اي  
حاجة

او نسيت ان اذكر شي ولكن هذه

معظم

الخطوات شيوعاً

وإذا اختلفت معك في شيء فليس

صعباً

ان تحل المشكلة بنفسك

((ربنا لا تؤاخذنا ان نسينا او

اخطانا))

((تم بحمد الله))



للاستفسار

MUSMIWHB@HOTMAIL.  
COM

والسلام عليكم

