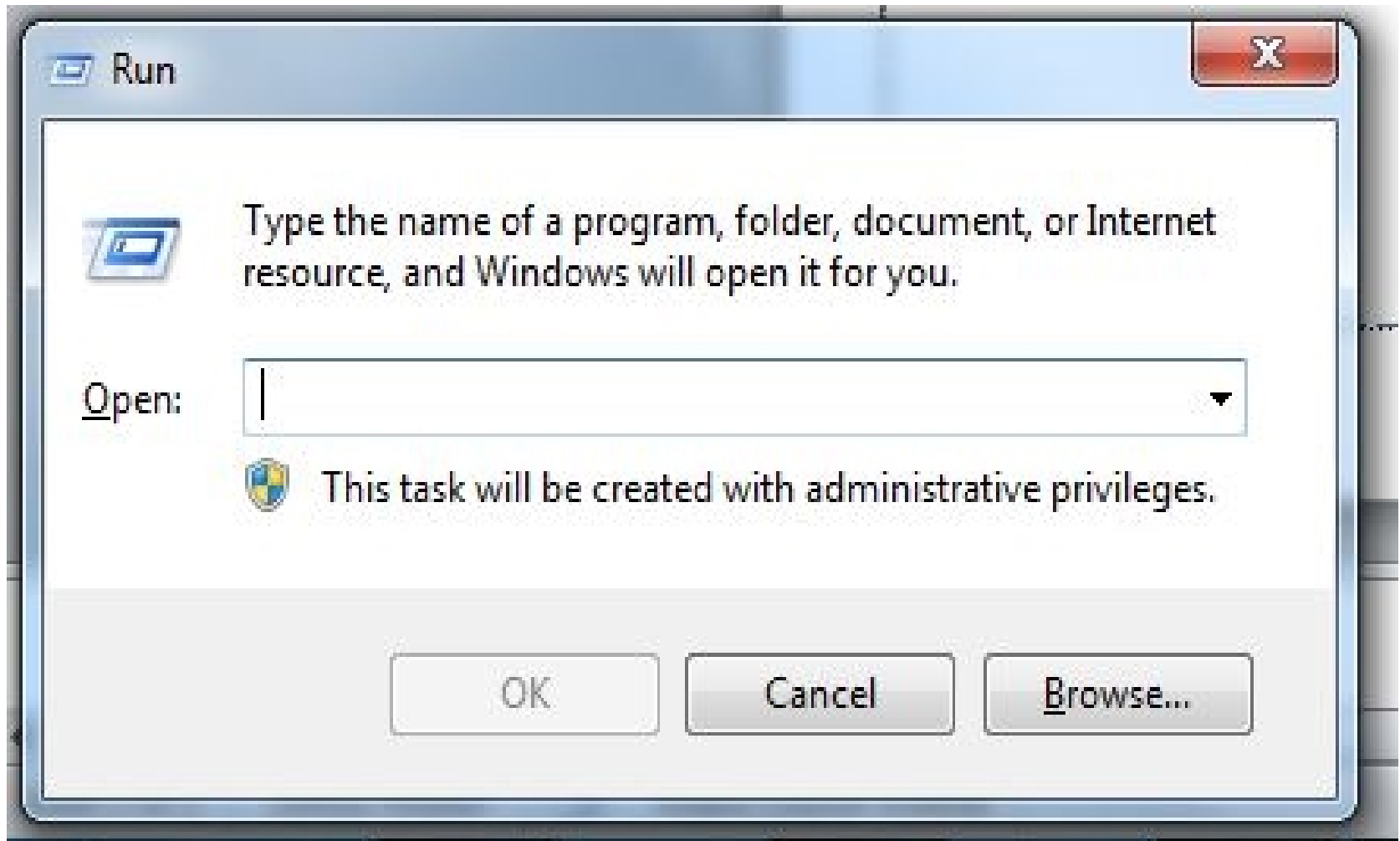


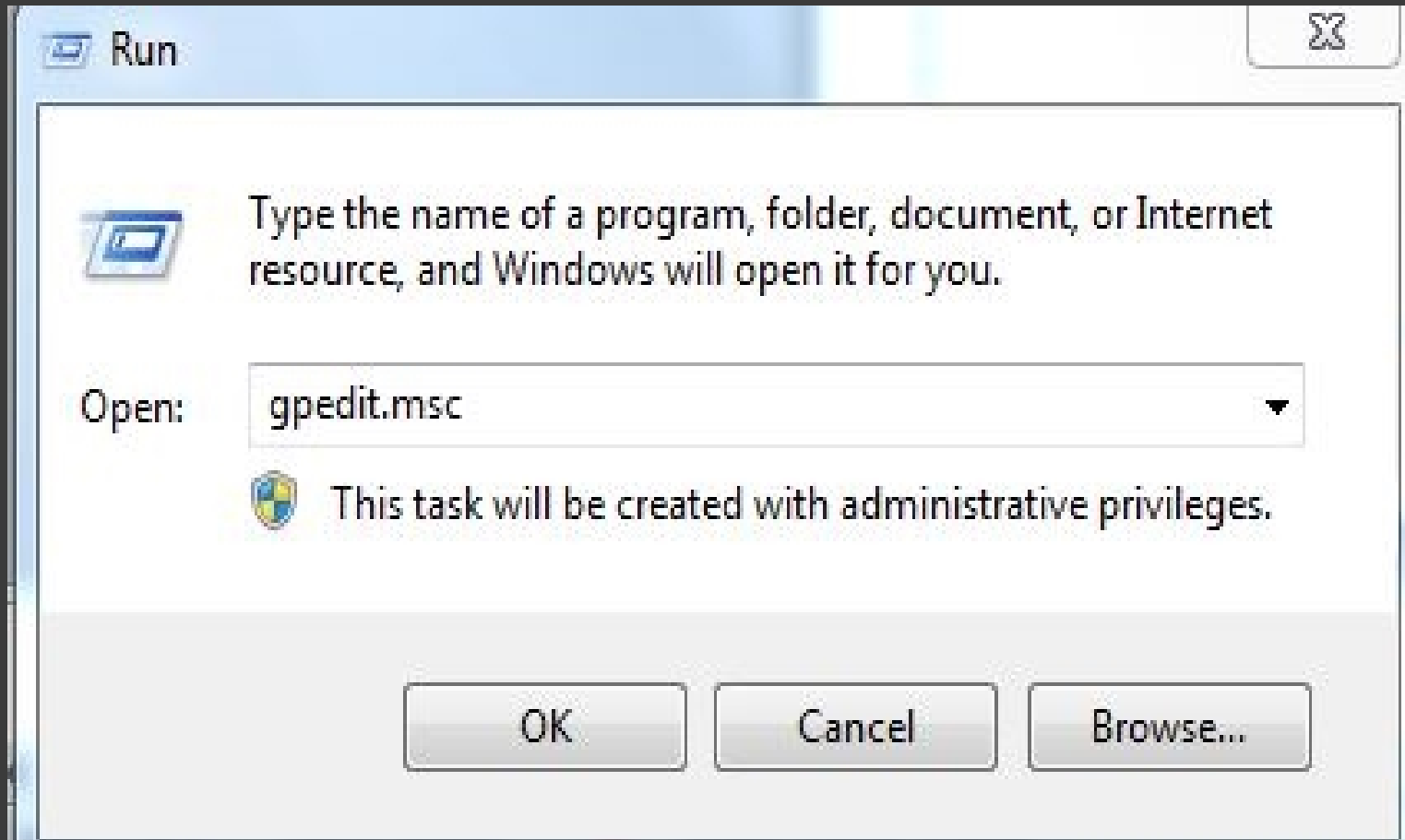
Hello Friends Today I am Going To Show You How To Fix



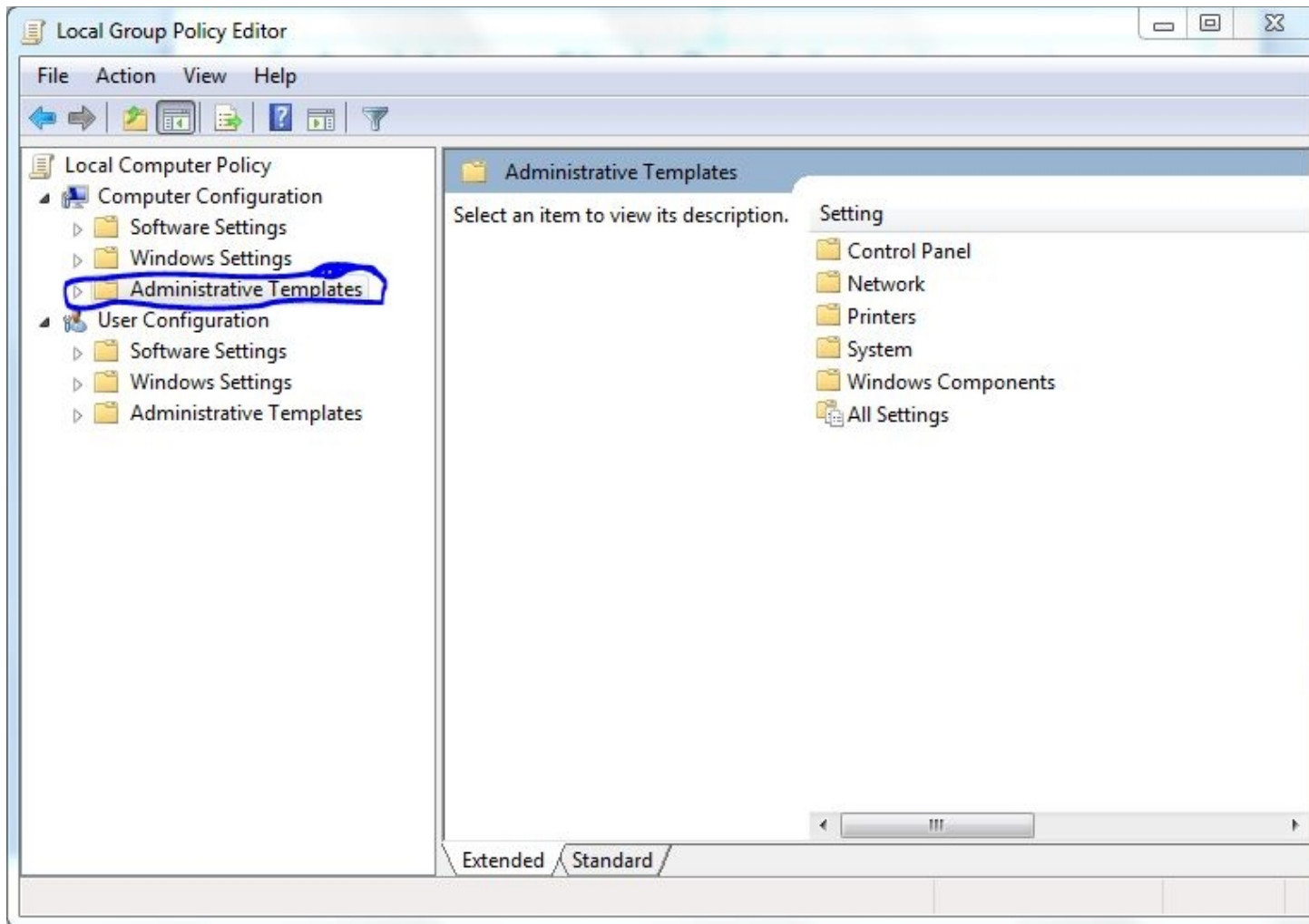
✓ Step No 1 Open Run Command Window



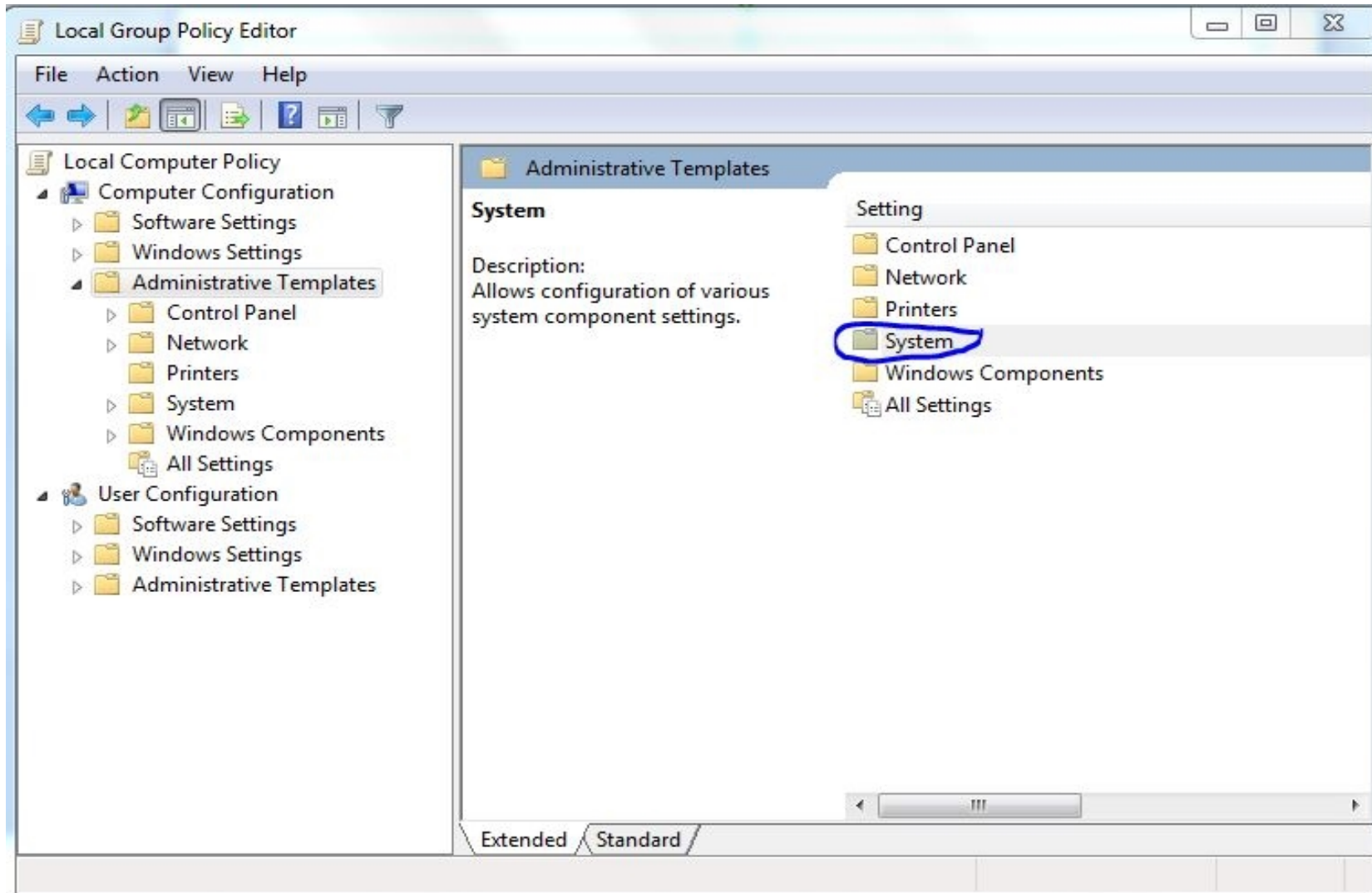
✓ Step No 2 Type gpedit.msc



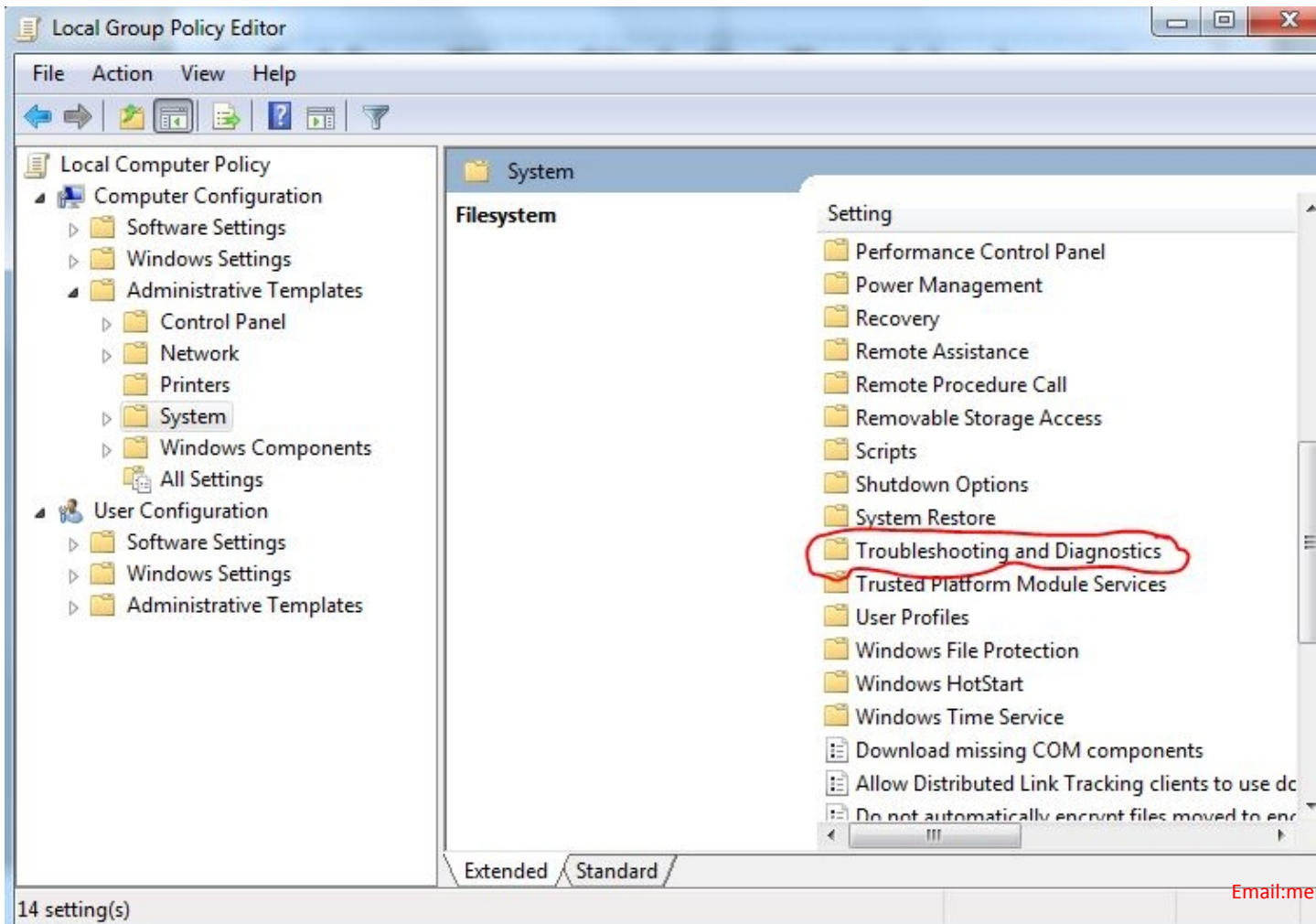
✓ AND NOW CLICK ON ADMINISTRATIVE TEMPLATES



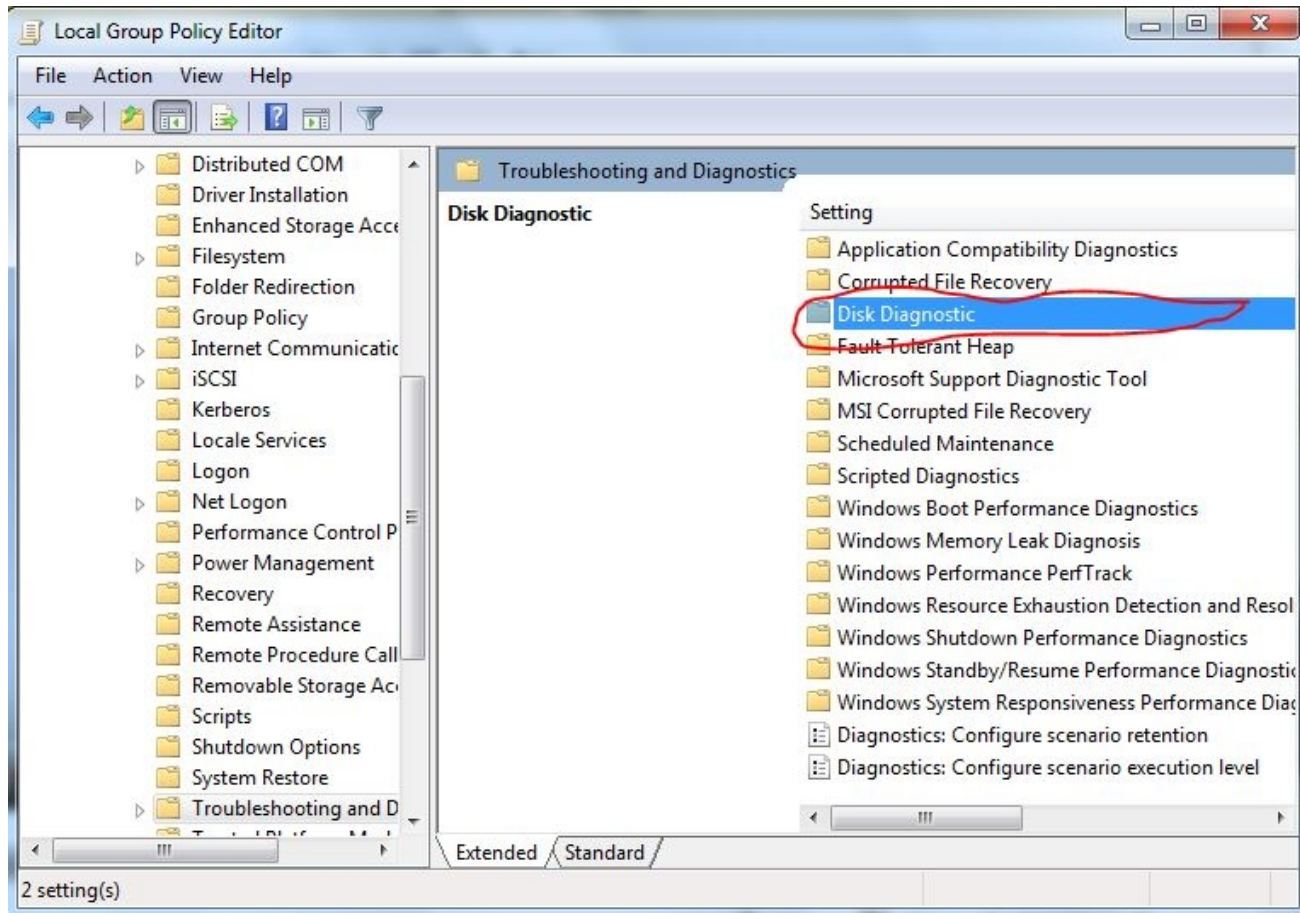
✓ After That Click On System Option



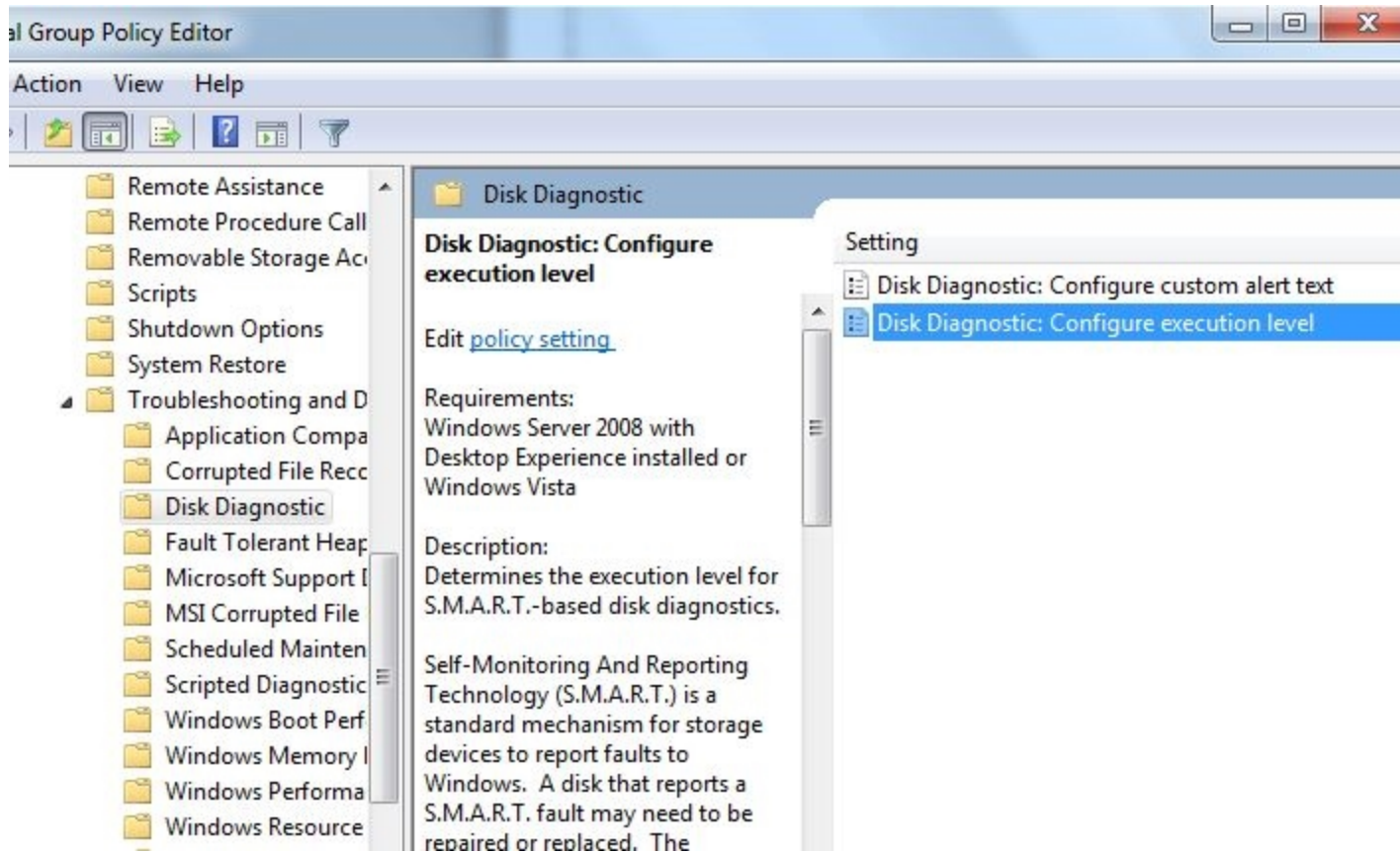
- ✓ After That Click On Troubleshooting and diagnostics



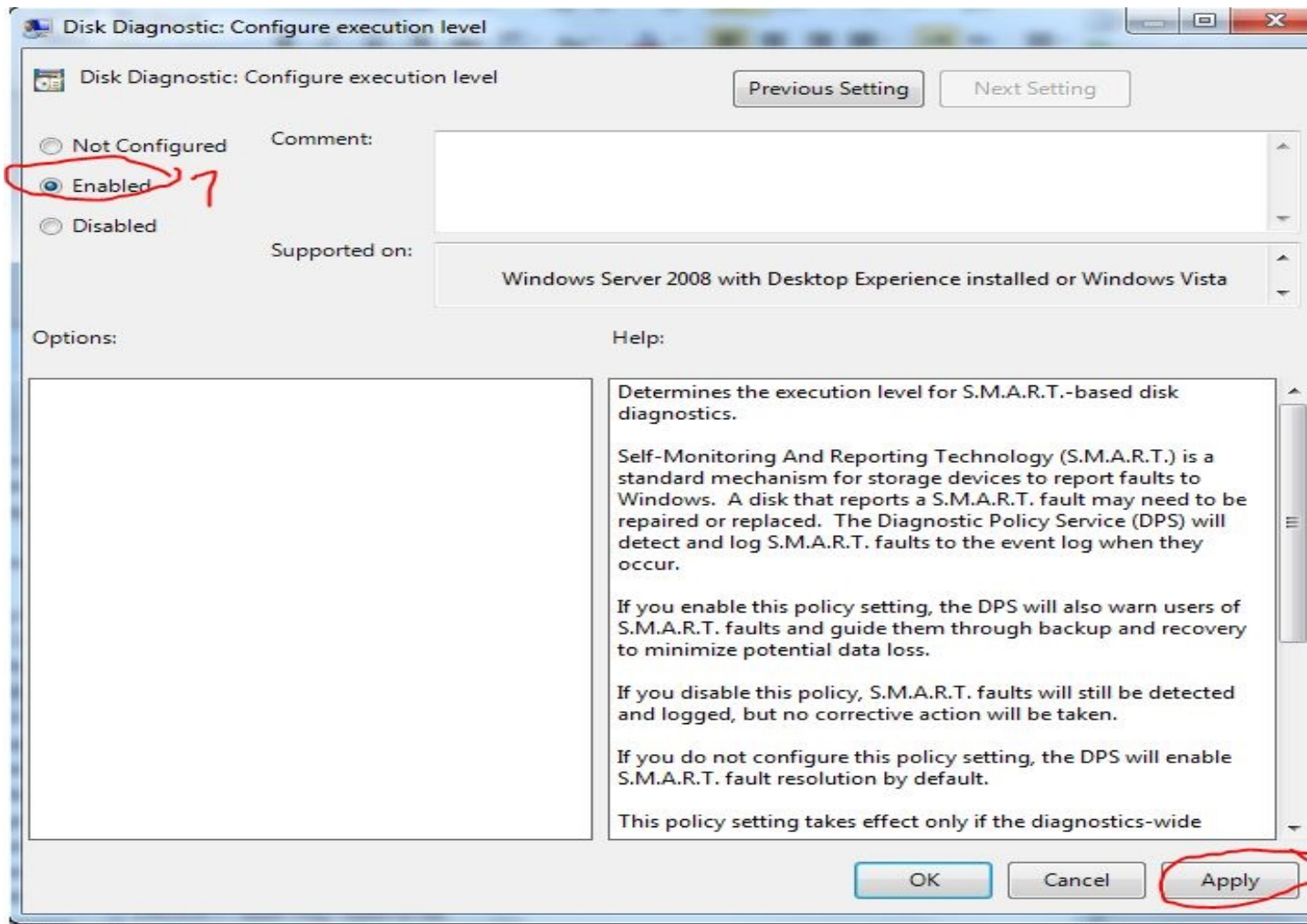
✓ After That Click On Disk diagnostics



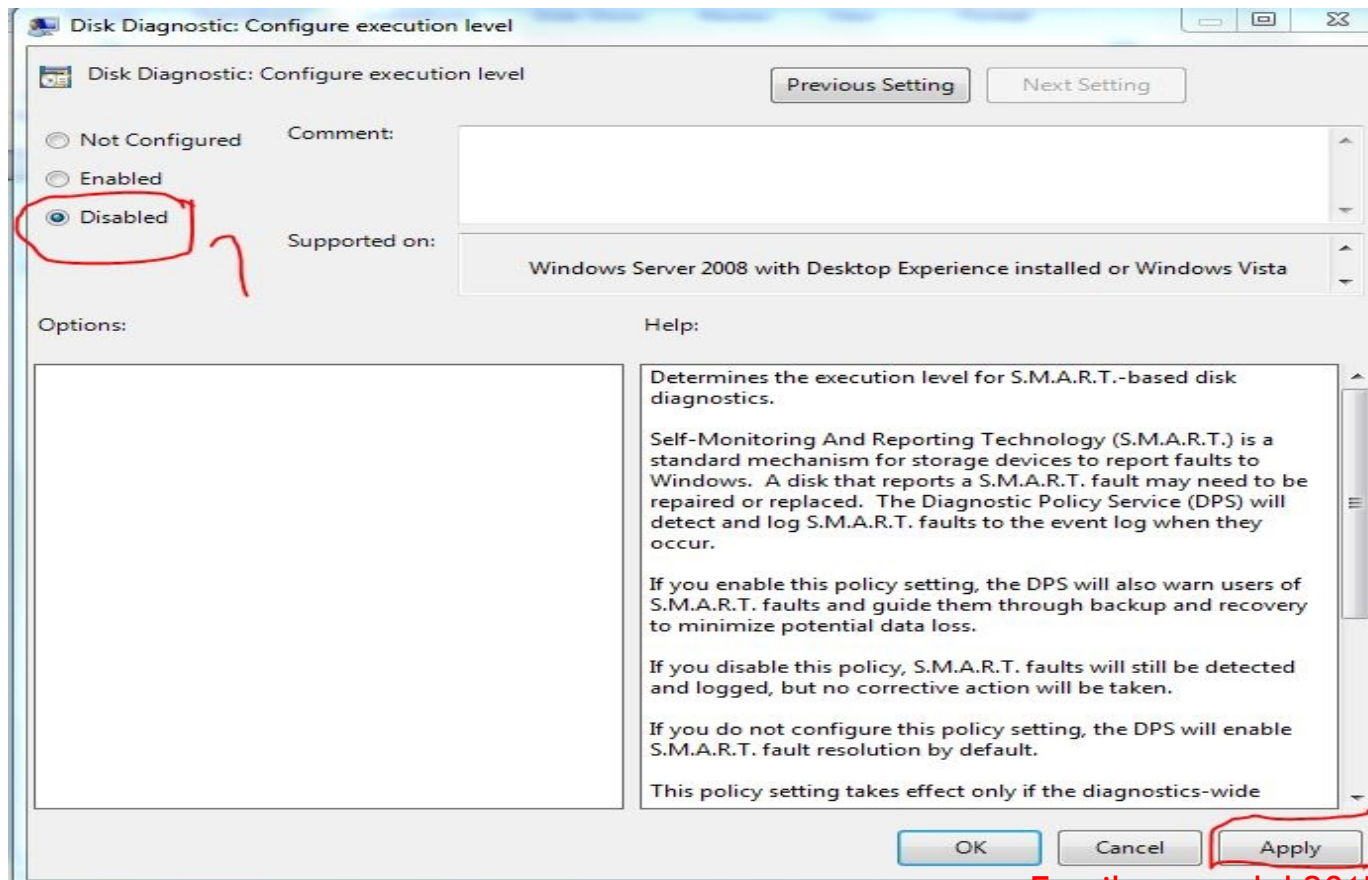
- ✓ And Last Click On Disk Diagnostic configure execution level



- ✓ Now Select Enabled option and click Apply And Close The Window And Restart Your PC



✓ AFTER RESTART YOUR PC GO TO SOME OPTION BUT NOW CHOOSE **DISABLE** OPTION THIS TIME



✓ NOW IT'S DONE...!
YOUR PROBLEM HAS BEEN SHORT
OUT



Thank you for following me

Prepared By eng: Mohamed Salah