

السلام عليكم ورحمة الله

سفيا ن شمبول ماجستير تقنية اتصالات

السودان الخرطوم

**تلفون 0111222233**

[sudansharp@gmail.com](mailto:sudansharp@gmail.com)

ارجو المراسلة والاتصال لمزيد من المعلومات

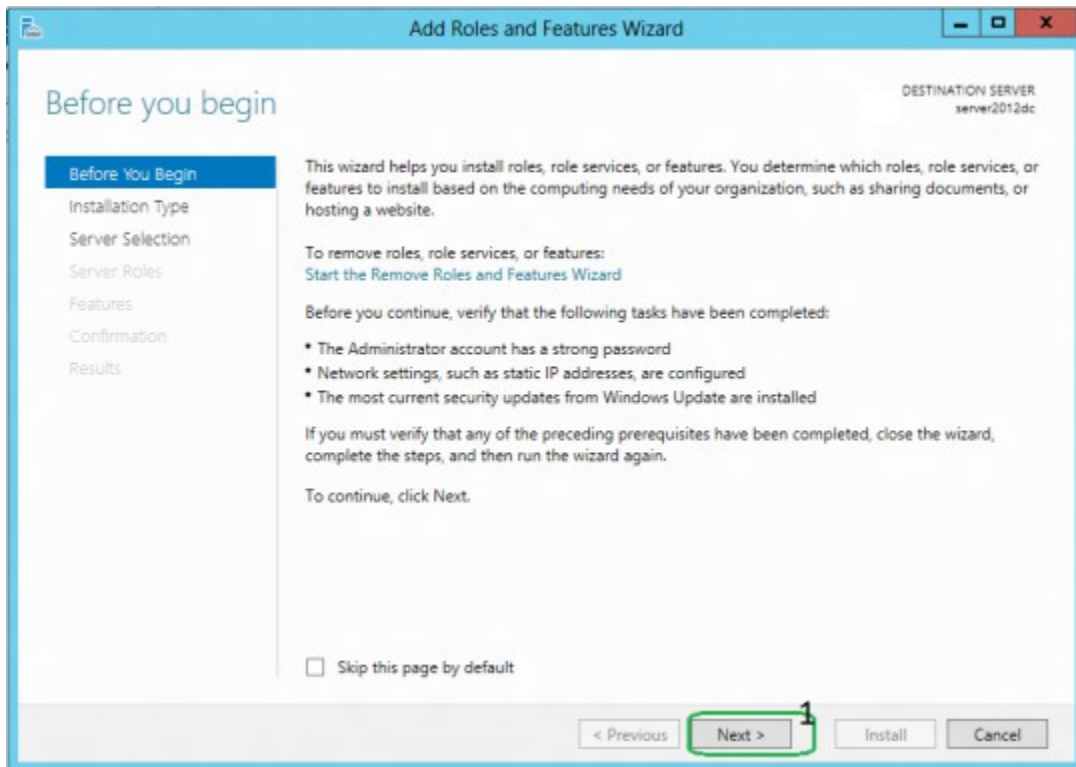
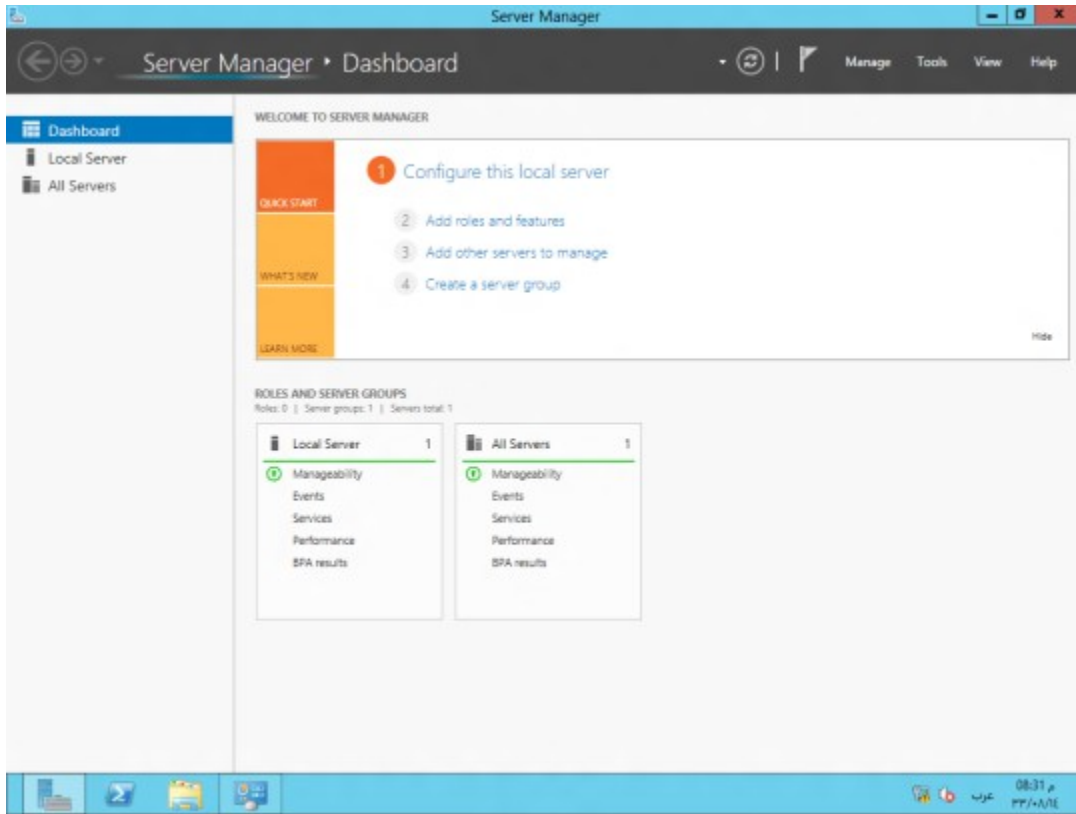
انشاء الله سوف اتحدث في السيرفر الجديد في حلقات

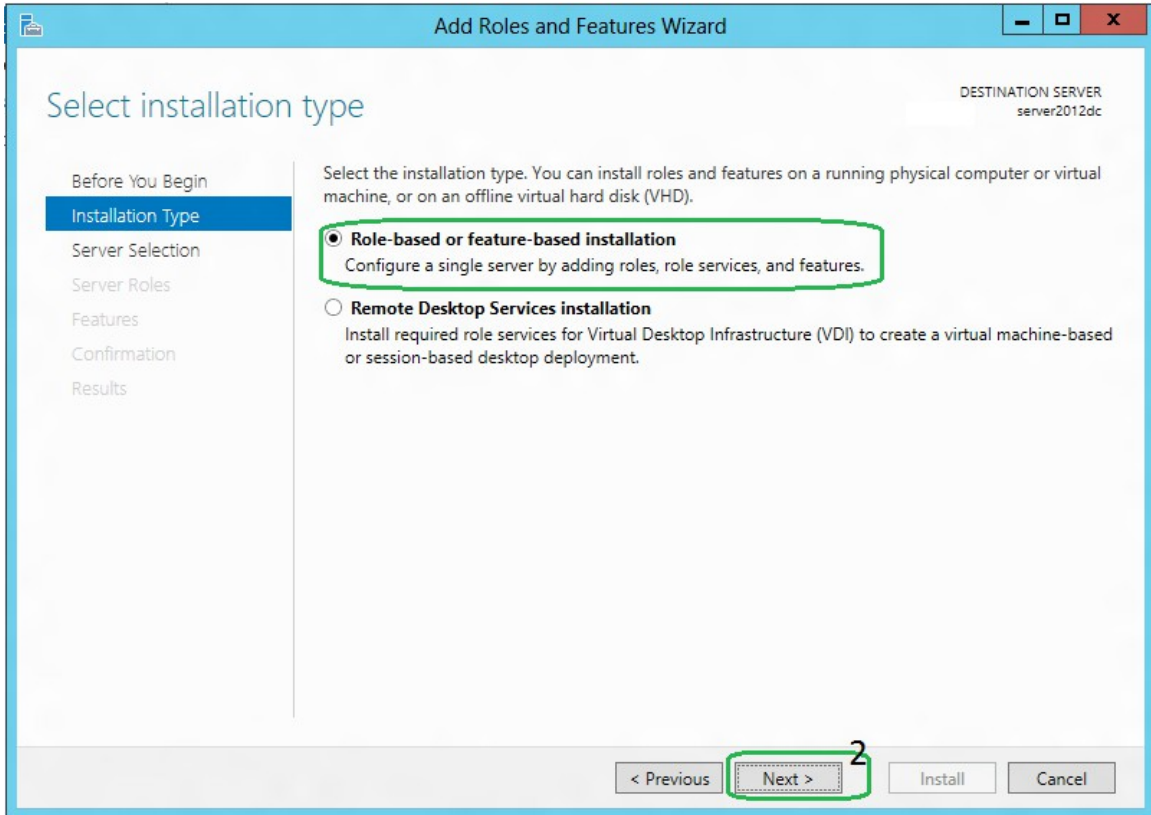
متصلة

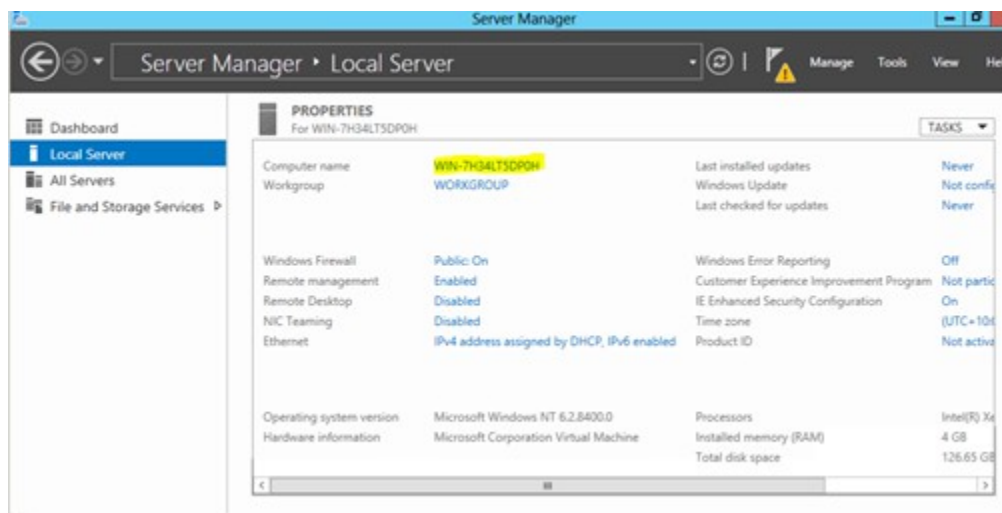
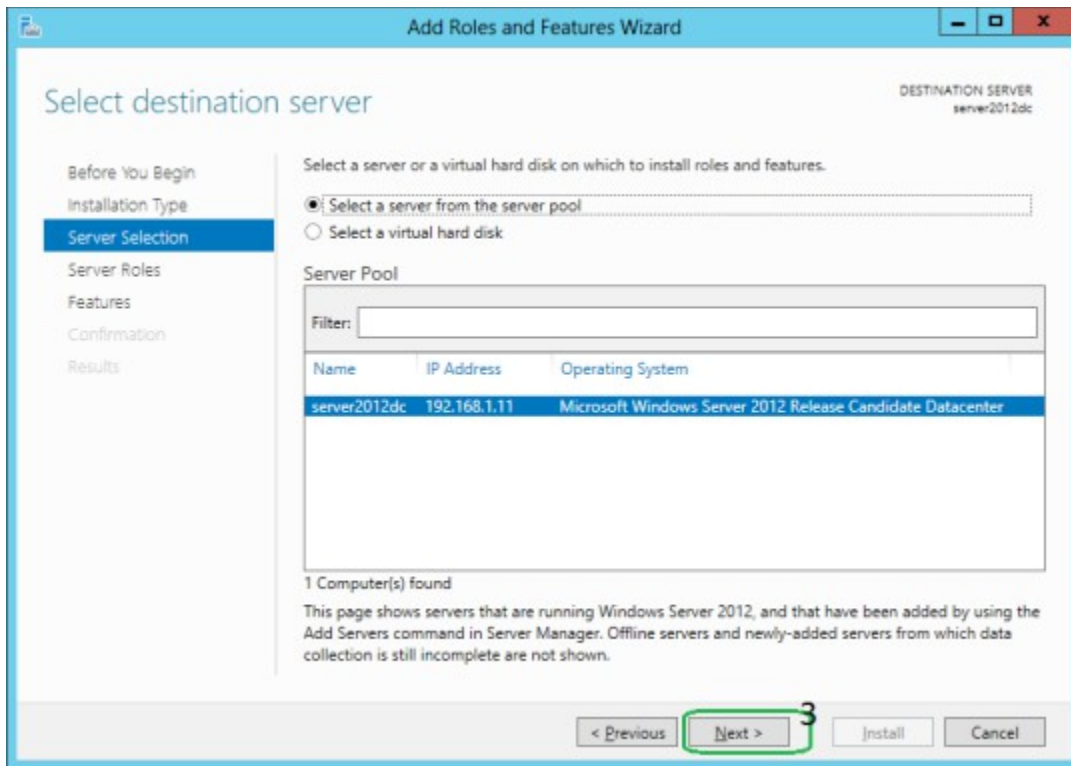
عايز اهدي زملاي في مجال الشبكات

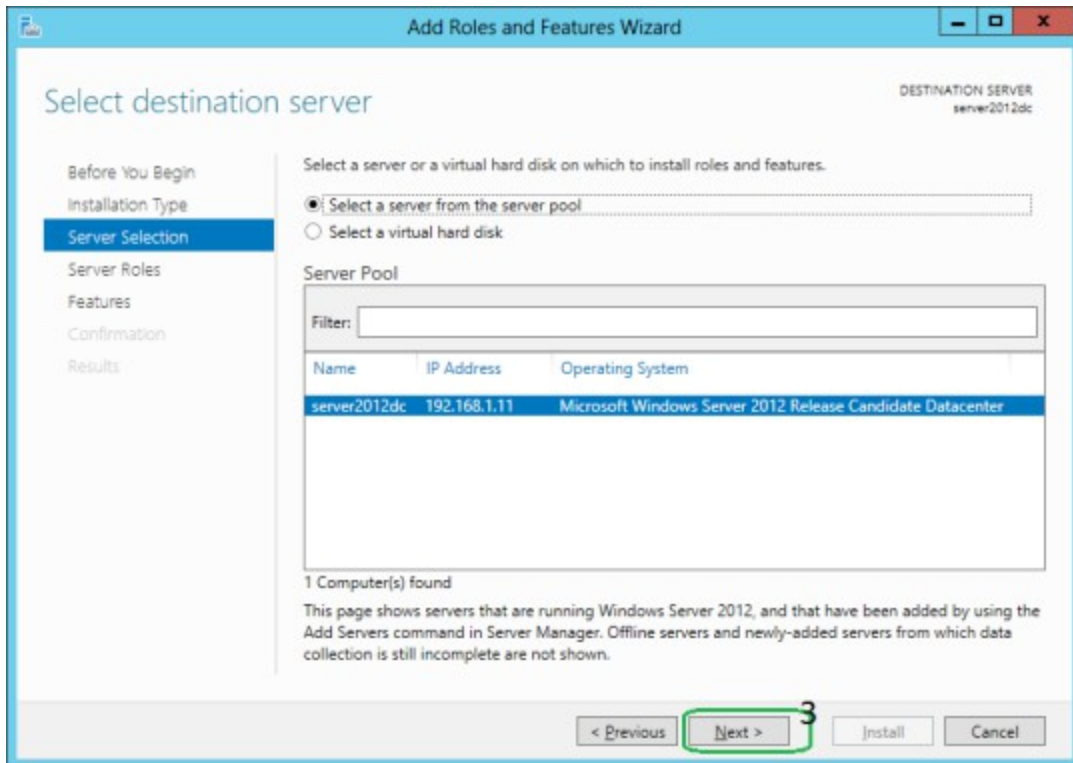
طريقة تثبيت

**Active directory in server 2012**









## Select server roles

Before You Begin

Installation Type

Server Selection

**Server Roles**

Features

Confirmation

Results

Select one or more roles to install on the selected server.

### Roles

- Active Directory Certificate Services
- Active Directory Domain Services**
- Active Directory Federation Services
- Active Directory Lightweight Directory Services
- Active Directory Rights Management Services
- Application Server
- DHCP Server
- DNS Server
- Fax Server
- File And Storage Services (Installed)
- Hyper-V
- Network Policy and Access Services
- Print and Document Services
- Remote Access
- Remote Desktop Services

## Select features

Before you begin

Installation Type

Server Selection

Server Roles

**Features**

AD DS

Confirmation

Results

Select one or more features to install on the selected server.

### Features

- BitLocker network unlock
- BranchCache
- Client for NFS
- Data Center Bridging
- Enhanced Storage
- Failover Clustering
- Group Policy Management
- Ink and Handwriting Services
- Internet Printing Client
- IP Address Management (IPAM) Server
- iSNS Server service
- LPR Port Monitor
- Management CData iIS Extension
- Media Foundation
- Message Queuing

## Active Directory Domain Services

DESTINATION SERVER  
WIN2012AD

Before You Begin  
Installation Type  
Server Selection  
Server Roles  
Features  
**AD DS**  
Confirmation  
Results

Active Directory Domain Services (AD DS) stores information about users, computers, and other devices on the network. AD DS helps administrators securely manage this information and facilitates resource sharing and collaboration between users. AD DS is also required for directory-enabled applications such as Microsoft Exchange Server and for other Windows Server technologies such as Group Policy.

### Things to note:

- To help ensure that users can still log on to the network in the case of a server outage, install a minimum of two domain controllers for a domain.
- AD DS requires a DNS server to be installed on the network. If you do not have a DNS server installed, you will be prompted to install the DNS Server role on this machine.
- Installing AD DS will also install the DFS Namespaces, DFS Replication, and File Replication services which are required by AD DS.



## Confirm installation selections

DESTINATION SERVER  
WIN2012AD

Before You Begin  
Installation Type  
Server Selection  
Server Roles  
Features  
AD DS  
**Confirmation**  
Results

To install the following roles, role services, or features on selected server, click Install.

Restart the destination server automatically if required

Optional features (such as administration tools) might be displayed on this page because they have been selected automatically. If you do not want to install these optional features, click Previous to clear their check boxes.

Active Directory Domain Services  
Group Policy Management  
Remote Server Administration Tools  
  Role Administration Tools  
    AD DS and AD LDS Tools  
      Active Directory module for Windows PowerShell  
    AD DS Tools  
      Active Directory Administrative Center  
      AD DS Snap-Ins and Command-Line Tools

## Installation progress

DESTINATION SERVER  
WIN2012AD

Before You Begin  
Installation Type  
Server Selection  
Server Roles  
Features  
AD DS  
Confirmation  
**Results**

View installation progress

 Starting installation

Active Directory Domain Services  
Group Policy Management  
Remote Server Administration Tools  
  Role Administration Tools  
    AD DS and AD LDS Tools  
      Active Directory module for Windows PowerShell  
    AD DS Tools  
      Active Directory Administrative Center  
      AD DS Snap-Ins and Command-Line Tools

# Installation progress

DESTINATION SERVER  
WIN2012AD

- Before You Begin
- Installation Type
- Server Selection
- Server Roles
- Features
- AD DS
- Confirmation

## Results

### View installation progress

#### Feature installation

Configuration required. Installation succeeded on WIN2012AD.

##### Active Directory Domain Services

Additional steps are required to make this machine a domain controller.

[Promote this server to a domain controller](#)

##### Group Policy Management

##### Remote Server Administration Tools

##### Role Administration Tools

##### AD DS and AD LDS Tools

Active Directory module for Windows PowerShell

##### AD DS Tools

Active Directory Administrative Center

AD DS Snap-Ins and Command-Line Tools



You can close this wizard without interrupting running tasks. View task progress or open this page again by clicking Notifications in the command bar, and then Task Details.

[Export configuration settings](#)

## Deployment Configuration

TARGET SERVER  
WIN2012AD

### Deployment Configuration

Domain Controller Options

Additional Options

Paths

Review Options

Prerequisites Check

Installation

Results

Select the deployment operation

- Add a domain controller to an existing domain
- Add a new domain to an existing forest
- Add a new forest

Specify the domain information for this operation

Domain:

Supply the credentials to perform this operation

<No credentials provided>

## Domain Controller Options

TARGET SERVER  
WIN2012AD

Deployment Configuration

### Domain Controller Options

DNS Options

Additional Options

Paths

Review Options

Prerequisites Check

Installation

Results

Select functional level of the new forest and root domain

Forest functional level:

Domain functional level:

Specify domain controller capabilities

- Domain Name System (DNS) server
- Global Catalog (GC)
- Read only domain controller (RODC)

Type the Directory Services Restore Mode (DSRM) password

Password:

Confirm password:

[More about domain controller options](#)

< Previous



Next >

Install

Cancel

## DNS Options

TARGET SERVER  
WIN2012AD

 A delegation for this DNS server cannot be created because the authoritative parent zone cannot be found... [Show more](#) 

- Deployment Configuration
- Domain Controller Options
- DNS Options**
- Additional Options
- Paths
- Review Options
- Prerequisites Check
- Installation
- Results

Specify DNS delegation options

Create DNS delegation

[More about DNS delegation](#)

< Previous

Next >

Install

Cancel

## Prerequisites Check

TARGET SERVER  
WIN2012AD

✔ All prerequisite checks passed successfully. Click 'Install' to begin installation. [Show more](#) ✕

Deployment Configuration  
Domain Controller Options  
    DNS Options  
Additional Options  
Paths  
Review Options  
**Prerequisites Check**  
Installation  
Results

Prerequisites need to be validated before Active Directory Domain Services is installed on this computer

[Rerun prerequisites check](#)

▲ View results

⚠ Windows Server 2012 Release Candidate domain controllers have a default for the security setting named "Allow cryptography algorithms compatible with Windows NT 4.0" that prevents weaker cryptography algorithms when establishing security channel sessions.

For more information about this setting, see Knowledge Base article 942564 (<http://go.microsoft.com/fwlink/?LinkId=104751>).

⚠ A delegation for this DNS server cannot be created because the authoritative parent zone cannot be found or it does not run Windows DNS server. If you are integrating with an existing DNS infrastructure, you should manually create a delegation to this DNS server in the parent zone to ensure reliable name resolution from outside the

⚠ If you click Install, the server automatically reboots at the end of the promotion operation.

[More about prerequisites](#)

< Previous    Next >    Install    Cancel

**انشاء الله سوف اوصل الايام التالية**